



William Christie
Candidate Property
Practitioner
Registered with PPRA
(FFC 121 152 2)
[0740552244](tel:0740552244)

william@newpointproperty.co.za

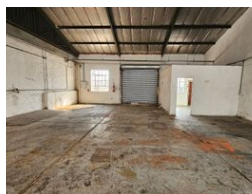
Contact Head Office

010 0354431

Office 40A
Eden Meadows Complex
1 Van Riebeeck Avenue
Greenstone
1609



Web Ref IWC132WVTL



R9,500 pm

Gross Monthly Rental R9,500 Excl. VAT
Monthly Rates R1 Excl. VAT

Monthly Levy R1 Excl. VAT



132m² Micro Factory in Secure Industrial Park – Perfect for Small-Scale Operations

Positioned within a secure, professionally managed industrial park, this versatile 132m² micro factory is the ideal space for small engineering, fabrication, storage, or light distribution businesses.

The unit features prepaid three-phase power, giving tenants full control over energy use and budgeting. A high-access roller shutter door allows for effortless loading and unloading, while the internal layout maximizes usable workspace.

Additional comforts include a neat kitchenette and private ablution facilities, ensuring a practical and self-contained environment for your team. With its excellent functionality and compact efficiency, this unit is designed to support your business's day-to-day

Features

Zoning Industrial

Interior

Floor Loading Cap. 5 Tn/m²
Power 3 Phase Yes
Power Amps 63

Exterior

Security Yes

Sizes

Floor Size 132m²
Land Size 132m²
Building Height 6m