



William Christie
Candidate Property
Practitioner
Registered with PPRA
(FFC 121 152 2)
0740552244

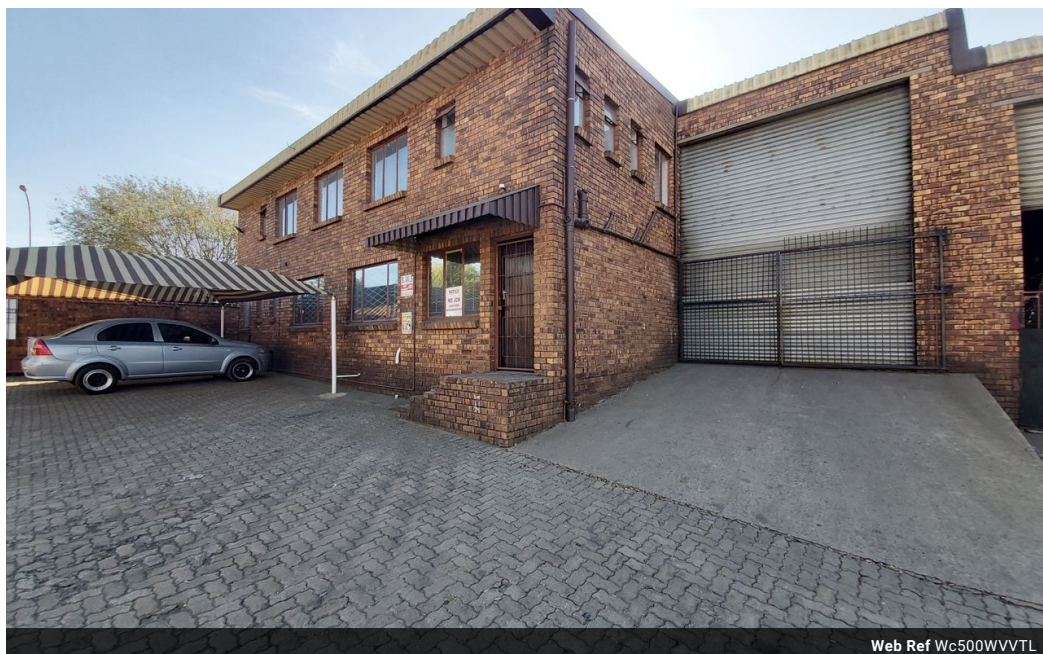
william@newpointproperty.co.za

Contact Head Office

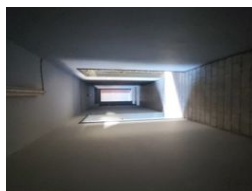
010 0354431

Office 40A
Eden Meadows Complex
1 Van Riebeeck Avenue
Greenstone
1609

500m² Mini Factory To Let in Wadeville



Web Ref Wc500WVVTL



R25,000 pm

Gross Monthly Rental R25,000 Excl. VAT
Monthly Rates R1 Excl. VAT

Monthly Levy R1 Excl. VAT



Secure Industrial Facility with Excellent Access – Ideal for Engineering & Fabrication

Located within a secure, access-controlled complex, this well-maintained industrial building offers a functional layout tailored to meet the needs of engineering, fabrication, or light manufacturing operations.

The warehouse/factory features a prominent, extra-large roller shutter door at the front, allowing for easy entry and exit of vehicles and goods. With generous height to the eaves, the space is well-suited for vertical storage or the installation of overhead equipment and cranes, providing flexibility for a range of industrial applications.

The office component includes multiple rooms that can be configured as boardrooms, private offices, or administrative workspaces. These areas are ideal for day-to-day management, client meetings, or team collaboration, and can be easily adapted

Features

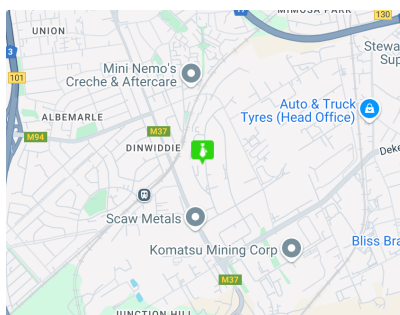
Zoning Industrial

Interior

Floor Loading Cap. 5 Tn/m²
Power 3 Phase Yes
Power Amps 100

Sizes

Floor Size 500m²
Land Size 500m²
Building Height 7m



<https://www.newpointproperty.co.za>