



William Christie
Candidate Property
Practitioner
Registered with PPRA
(FFC 121 152 2)
0740552244

william@newpointproperty.co.za

Contact Head Office

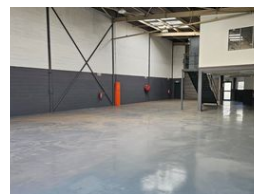
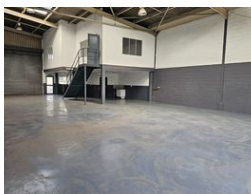
010 0354431

Office 40A
Eden Meadows Complex
1 Van Riebeeck Avenue
Greenstone
1609

394m² Mini Factory To Let in Wadeville



Web Ref CL12894



R18,912 pm

Gross Monthly Rental R18,912 Excl. VAT

Monthly Levy R2,500 Excl. VAT



0



0

Secure & Versatile Mini Factory To Let in Prime Wadeville Location

Positioned in the heart of Wadeville's bustling industrial zone, this neat and well-maintained mini factory is available to let and ideally suited for light industrial or manufacturing operations. Featuring durable, clean painted floors and a spacious layout, the unit is designed for efficient workflows and easy maintenance. The 80-amp three-phase power supply ensures reliable support for machinery and equipment, while the well-appointed office space provides a comfortable and functional environment for admin and operations.

Located within a secure, access-controlled industrial park with 24-hour security, this unit offers peace of mind and around-the-clock operational flexibility. Natural light streams through large windows, enhancing the workspace, and the park's strategic

Features

Zoning Industrial

Interior

Floor Loading Cap. 5 Tn/m²
Power 3 Phase Yes
Power Amps 80

Sizes

Floor Size 394m²
Land Size 394m²
Building Height 8m



<https://www.newpointproperty.co.za>