



William Christie
Candidate Property
Practitioner
Registered with PPRA
(FFC 121 152 2)
0740552244

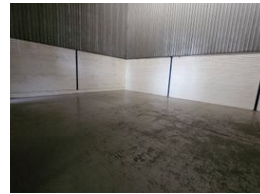
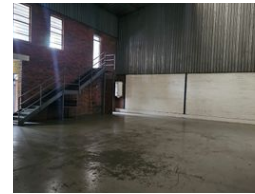
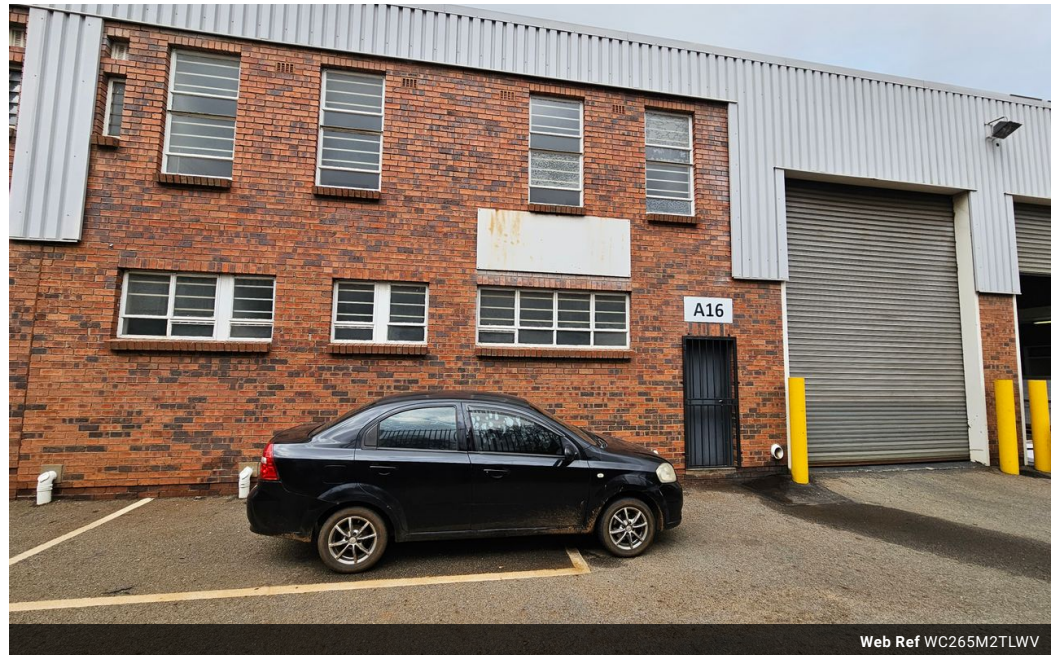
william@newpointproperty.co.za

Contact Head Office

010 0354431

Office 40A
Eden Meadows Complex
1 Van Riebeeck Avenue
Greenstone
1609

265m² Mini Factory To Let in Wadeville



R10,600 pm

Gross Monthly Rental R10,600 Excl. VAT
Monthly Rates R1 Excl. VAT

Monthly Levy R1 Excl. VAT

0 0

Neat and well-maintained mini unit is situated within a safe and secure industrial park

This neat and well-maintained mini unit is situated within a safe and secure industrial park, offering peace of mind for any business owner. The unit boasts excellent height, ideal for vertical stacking or the installation of a mezzanine floor to maximize space.

Equipped with 60 amps of three-phase power, the property is well-suited for a variety of light industrial or manufacturing operations. Inside, you'll find an open-plan administrative office complete with a private kitchen and bathroom, providing a comfortable working environment. Staff ablutions are available for both male and female employees.

Features

Zoning Industrial

Interior

Floor Loading Cap. 5 Tn/m²
Power 3 Phase Yes
Power Amps 60

Exterior

Security Yes

Sizes

Floor Size 265m²
Land Size 265m²
Building Height 9m

