



Martin Montgomery

Candidate Property Practitioner
Registered with PPRA
(FFC 121 152 3)

0818542055

martin@newpointproperty.co.za

Contact Head Office

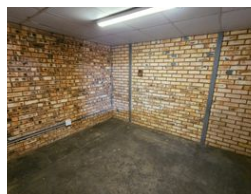
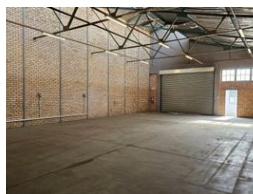
010 0354431

Office 40A
Eden Meadows Complex
1 Van Riebeeck Avenue
Greenstone
1609

216m² Mini Factory To Let in Wadeville



Web Ref CL10916



R11,880 pm

Gross Monthly Rental R11,880 Excl. VAT



0



0

216m² to let in Wadeville

This neat mini unit available for lease in Wadeville is situated in a safe and secure industrial park, conveniently located near major highway networks. The unit is accessible via a large roller door and includes two administrative offices. The factory floor is well-maintained and spacious. Additional amenities include staff ablutions and a kitchenette.

Features

Zoning Industrial

Interior

Floor Loading Cap. 2 Tn/m²
Power 3 Phase Yes
Power Amps 63

Exterior

Security Yes

Sizes

Floor Size 216m²
Land Size 216m²
Building Height 8m



<https://www.newpointproperty.co.za>