



William Christie
Candidate Property
Practitioner
Registered with PPRA
(FFC 121 152 2)
0740552244

william@newpointproperty.co.za

Contact Head Office

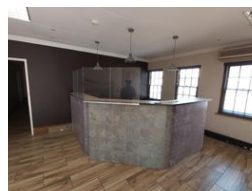
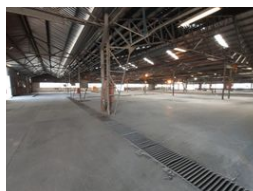
010 0354431

Office 40A
Eden Meadows Complex
1 Van Riebeeck Avenue
Greenstone
1609

5,700m² Factory To Let in Wadeville



Web Ref CL13160



R360,000 pm

Gross Monthly Rental R360,000 Excl. VAT



20

Standalone Industrial Powerhouse with Cranes & Massive Yard Near N17

Unlock the potential of this exceptionally maintained standalone factory/workshop, ideally located just off the N17 for effortless logistics and transport access. With multiple entrances and well-appointed office spaces for admin and executive use, this property offers a balanced environment for operational efficiency and professional functionality.

Situated on a vast 39,000m² paved yard, the facility boasts ample space for workshops, storage, truck circulation, and outdoor operations. The warehouse is equipped with cranes ranging from 2 to 5 tons and supported by a strong three-phase power supply, making it a top-tier solution for both light and heavy industrial applications. Enquire today to arrange a viewing of this rare

Features

Zoning Industrial

Interior

Floor Loading Cap.	50 Tn/m ²
Air Conditioning	Yes
Power 3 Phase	Yes

Exterior

Covered Parking Bays	20
Open Parking Bays	20

Sizes

Floor Size	5,700m ²
Land Size	38,000m ²
Building Height	6m



<https://www.newpointproperty.co.za>