



**William Christie**  
Candidate Property  
Practitioner  
Registered with PPRA  
(FFC 121 152 2)  
0740552244

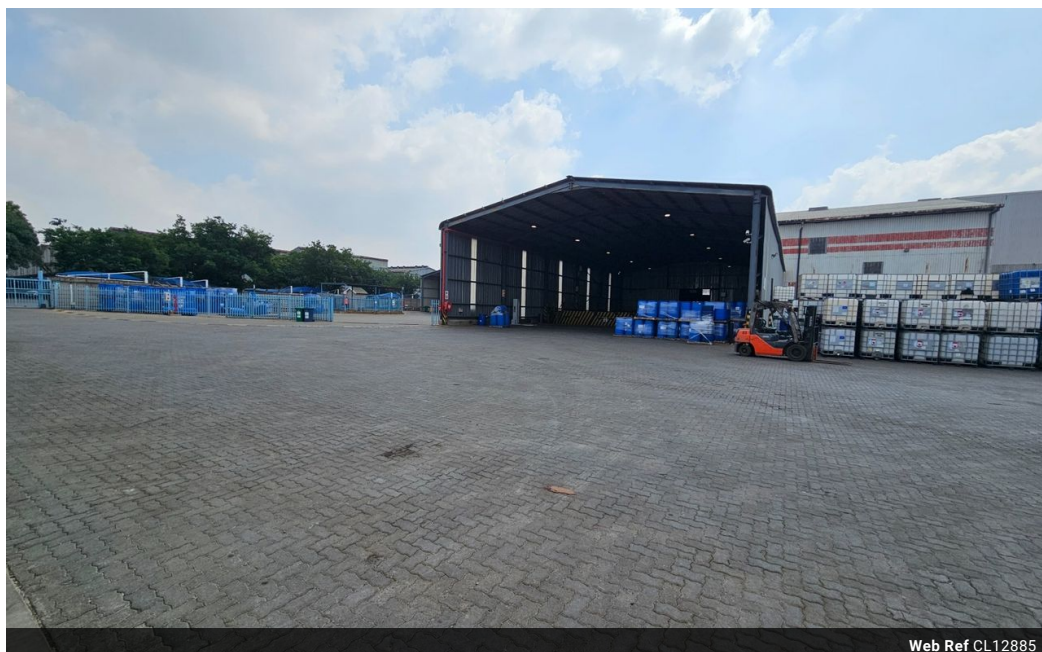
[william@newpointproperty.co.za](mailto:william@newpointproperty.co.za)

Contact Head Office

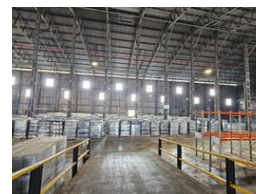
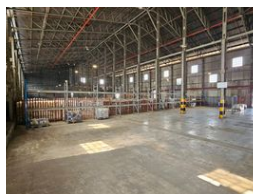
010 0354431

Office 40A  
Eden Meadows Complex  
1 Van Riebeeck Avenue  
Greenstone  
1609

4,800m<sup>2</sup> Factory To Let in Wadeville



Web Ref CL12885



R300,000 pm

Gross Monthly Rental R300,000 Excl. VAT



Expansive 4,800m<sup>2</sup> Industrial Facility on 16,500m<sup>2</sup> Stand – Ideal for Logistics & Fabrication

Unlock serious operational potential with this large-scale industrial property, perfectly suited for logistics, engineering, or fabrication businesses. Set on a 16,500m<sup>2</sup> stand, the property offers approximately 4,800m<sup>2</sup> of under-roof space with generous roof height and a fully installed sprinkler system. Multiple roller shutter doors ensure smooth vehicle access, supporting high-volume, heavy-duty operations with ease.

Enhancing functionality are dedicated loading areas, including both dock-level and on-grade access points, plus a convenient wash bay for larger vehicles. The expansive yard is designed with multiple entry and exit gates to streamline truck movement and optimize traffic flow. This is a rare opportunity to secure a fully equipped facility in a strategic location—contact us today to book

## Features

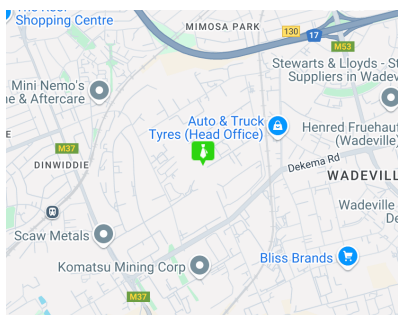
**Zoning** Industrial

### Interior

Floor Loading Cap. 5 Tn/m<sup>2</sup>  
Power 3 Phase Yes

### Sizes

Floor Size 4,800m<sup>2</sup>  
Land Size 16,500m<sup>2</sup>  
Building Height 1m



<https://www.newpointproperty.co.za>