



**Martin Montgomery**

Candidate Property Practitioner  
Registered with PPRA  
(FFC 121 152 3)

0818542055

[martin@newpointproperty.co.za](mailto:martin@newpointproperty.co.za)

Contact Head Office

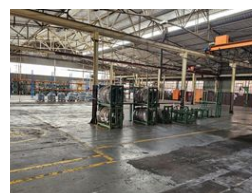
010 0354431

Office 40A  
Eden Meadows Complex  
1 Van Riebeeck Avenue  
Greenstone  
1609

1,850m<sup>2</sup> Factory To Let in Wadeville



Web Ref CL11521



R92,500 pm

Gross Monthly Rental R92,500 Excl. VAT



0



0

## 1 850m<sup>2</sup> Warehouse in Wadeville, Germiston

Introducing a well-maintained industrial factory available for lease in the vibrant industrial hub of Wadeville, Germiston. This facility features a robust 400-amp electrical infrastructure, making it perfect for a diverse array of industrial activities, including engineering and plastic molding. The factory is designed for efficiency, with easy access provided by two large roller doors, accommodating large trucks and facilitating smooth logistics operations.

Inside, you'll find a spacious interior complemented by a substantial office component, ideal for supporting a sizable workforce. The property also offers ample covered parking for staff, ensuring convenience for employees. Further enhancing its operational

## Features

**Zoning** Industrial

### Interior

Floor Loading Cap.	10 Tn/m <sup>2</sup>
Power 3 Phase	Yes
Power Amps	400

### Sizes

Floor Size	1,850m <sup>2</sup>
Land Size	2,500m <sup>2</sup>
Building Height	7m

