



Brandon Whitehead
Candidate Property
Practitioner
Registered with PPRA
(FFC 121 151 9)
0817743977

brandon@newpointproperty.co.za

Contact Head Office

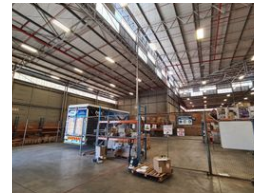
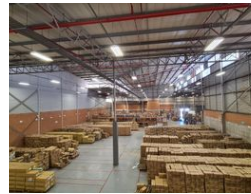
010 0354431

Office 40A
Eden Meadows Complex
1 Van Riebeeck Avenue
Greenstone
1609

3,348m² Warehouse To Let in Tunney



Web Ref TL3348BWTUNNEY



R217,620 pm

Gross Monthly Rental R217,620 Excl. VAT

20 18

3 348m² A-grade industrial Warehouse in Tunney, Germiston

Nestled within a secure park in Tunney, Germiston, an exceptional A-grade warehousing facility awaits leasing opportunities. Spanning 3348 square meters, this meticulously maintained property seamlessly integrates spacious warehouse and office areas. Strategically positioned for accessibility, it offers direct access to the N12 highway, enhancing logistical efficiency. The warehouse boasts impressive eaves reaching approximately 12 meters and is safeguarded by comprehensive sprinkler systems, complemented by a loading bay and an on-grade roller shutter door for seamless stock movement.

The generously proportioned warehouse, bathed in natural light, fosters a comfortable and well-illuminated workspace. Across two

Features

Building Name Zoning

Unit C Tunney Ridge Business Park
Industrial

Interior

Air Conditioning	Yes
Power 3 Phase	Yes
Power Amps	250

Exterior

Security	Yes
Covered Parking Bays	20
Open Parking Bays	18

Sizes

Floor Size	3,348m ²
Land Size	5,000m ²
Building Height	12m



<https://www.newpointproperty.co.za>