



Brandon Whitehead
Candidate Property
Practitioner
Registered with PPRA
(FFC 121 151 9)
0817743977

brandon@newpointproperty.co.za

Contact Head Office

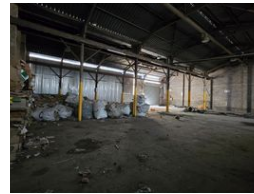
010 0354431

Office 40A
Eden Meadows Complex
1 Van Riebeeck Avenue
Greenstone
1609

588m² Warehouse To Let in Rustivia



Web Ref CL13696



R29,400 pm

Gross Monthly Rental R29,400 Excl. VAT

0 4

588m² Warehouse with Yard & Heavy Power in Rustivia – Prime Location for Logistics & Manufacturing

Boost your operations with this 588m² warehouse in Rustivia, Germiston, featuring a spacious yard with super link access and a wide roller shutter door for efficient loading. The property offers a robust 200-amp three-phase power supply, making it ideal for manufacturing, logistics, or storage, plus an 80m² office component for seamless administration.

With high eaves, ample truck maneuvering space, and 24-hour on-site security, this facility is built for productivity and safety. Its strategic location near the N12 and O.R. Tambo International Airport provides excellent connectivity for distribution and transport.

Features

Zoning Industrial

Interior

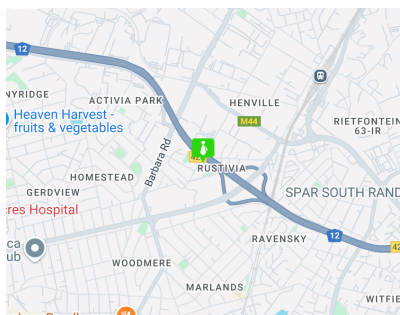
Power 3 Phase	Yes
Power Amps	200

Exterior

Security	Yes
Open Parking Bays	4

Sizes

Floor Size	588m ²
Land Size	5,000m ²
Building Height	7m



<https://www.newpointproperty.co.za>