



Brandon Whitehead

Candidate Property Practitioner
Registered with PPRA
(FFC 121 151 9)

0817743977

brandon@newpointproperty.co.za

Contact Head Office

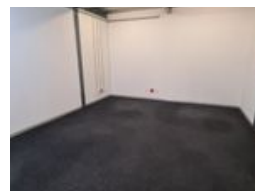
010 0354431

Office 40A
Eden Meadows Complex
1 Van Riebeeck Avenue
Greenstone
1609

284m² Warehouse To Let in Meadowdale



Web Ref CL13691



R22,720 pm

Gross Monthly Rental R22,720 Excl. VAT
Monthly Rates R1 Excl. VAT

Monthly Levy R1 Excl. VAT



284m² Warehouse To Let in Meadowdale – Prime Access Near O.R. Tambo

This 284m² industrial warehouse in Meadowdale, Germiston, is now available for lease. Positioned near O.R. Tambo International Airport with direct access to the R21 and R24 highways, it's perfect for businesses needing efficient logistics and transport routes. The unit offers 220m² of warehouse space plus a 64m² mezzanine and office component.

Features include a roller shutter door for smooth loading, 60 amps of 3-phase power, and truck access. Located close to public transport and major industrial hubs, this property is ideal for light to medium industrial operations looking for convenience and

Features

Zoning Industrial

Interior

Floor Loading Cap.	3 Tn/m²
Air Conditioning	Yes
Power 3 Phase	Yes
Power Amps	63

Exterior

Security	Yes
Covered Parking Bays	2
Open Parking Bays	10

Sizes

Floor Size	284m²
Land Size	284m²
Building Height	7m

Extras

Warehouse Office Security Estate

