



Brandon Whitehead

Candidate Property Practitioner
Registered with PPRA
(FFC 121 151 9)

0817743977

brandon@newpointproperty.co.za

Contact Head Office

010 0354431

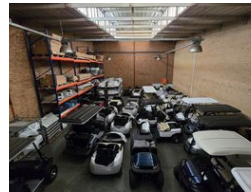
Office 40A
Eden Meadows Complex
1 Van Riebeeck Avenue
Greenstone
1609

350m² Warehouse To Let in Meadowdale

NEW



Web Ref BW35050C9CL



R21,525 pm

Gross Monthly Rental R21,525 Excl. VAT
Monthly Rates R1 Excl. VAT

Monthly Levy R1 Excl. VAT



0



4

Secure 350m² Warehouse Unit To Let in Prime Meadowdale Location

Position your business in this 350m² warehouse unit, perfectly suited for light industrial or warehousing operations. The open-plan layout offers excellent height to the eaves, abundant natural light, and an 80-amp three-phase power supply. Access is seamless with an on-grade roller shutter door, accommodating trucks of up to 8 tons with ease.

Located in a well-managed, access-controlled industrial park with 24-hour security, the unit includes a neat 60m² office component with its own toilet and kitchen. Additional staff amenities include separate male and female bathrooms and a small kitchenette downstairs. Strategically positioned in Meadowdale near key highways and O.R. Tambo International Airport, this is a highly

Features

Zoning Industrial

Interior

Floor Loading Cap. 2 Tn/m²
Power 3 Phase Yes
Power Amps 80

Exterior

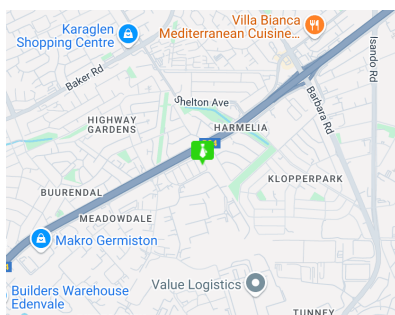
Security Yes
Open Parking Bays 4

Sizes

Floor Size 350m²
Land Size 350m²
Building Height 7m

Extras

Warehouse Office Security Estate Open Plan Kitchen Separate Toilet



<https://www.newpointproperty.co.za>