



Brandon Whitehead

Candidate Property Practitioner
Registered with PPRA
(FFC 121 151 9)

0817743977

brandon@newpointproperty.co.za

Contact Head Office

010 0354431

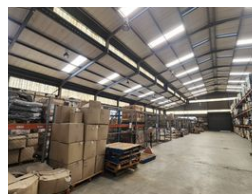
Office 40A
Eden Meadows Complex
1 Van Riebeeck Avenue
Greenstone
1609

7,726m² Warehouse To Let in Meadowdale

NEW



Web Ref BW772692CL



R502,190 pm

Gross Monthly Rental R502,190 Excl. VAT
Monthly Rates R1 Excl. VAT

Monthly Levy R1 Excl. VAT

18 30

Prime 7,726m² Industrial Powerhouse with Premium Infrastructure in Meadowdale

Unlock unparalleled operational capacity with this expansive 7,726m² facility, ideally positioned on a 12,884m² stand in the heart of Meadowdale's sought-after industrial node. Featuring two interconnected warehouses, six roller shutter doors, 630 amps of 3-phase power, and backup utilities including water supply and an external fuel tank, this property is purpose-built for large-scale logistics, manufacturing, or distribution operations.

The modern office component includes dual wings, a training room, showroom, and multiple storerooms, while generous yard space ensures smooth truck movement. A secure guard house and ample ablution facilities complete this highly functional package. With direct access to major routes and available at R502,190/month (ex VAT and utilities), this powerhouse property

Features

Zoning Industrial

Interior

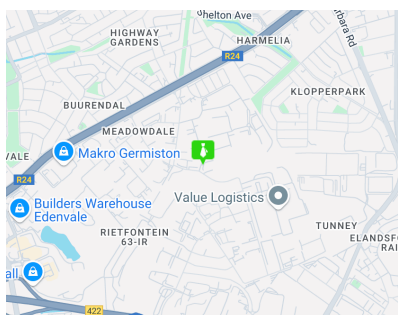
Floor Loading Cap.	2 Tn/m ²
Air Conditioning	Yes
Power 3 Phase	Yes
Power Amps	630

Exterior

Security	Yes
Covered Parking Bays	15
Basement Parkings	3
Open Parking Bays	30

Sizes

Floor Size	7,726m ²
Land Size	12,844m ²
Building Height	8m



<https://www.newpointproperty.co.za>