



Brandon Whitehead
Candidate Property
Practitioner
Registered with PPRA
(FFC 121 151 9)
0817743977

brandon@newpointproperty.co.za

Contact Head Office

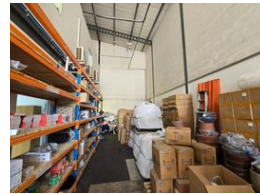
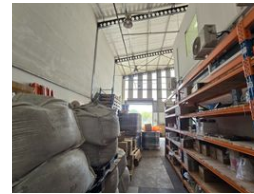
010 0354431

Office 40A
Eden Meadows Complex
1 Van Riebeeck Avenue
Greenstone
1609

284m² Warehouse To Let in Meadowdale



Web Ref BCL12505RW



R21,300 pm

Gross Monthly Rental R21,300 Excl. VAT
Monthly Rates R1,905.6 Excl. VAT

Monthly Levy R3,643.7 Excl. VAT

2 10

Secure 284m² Industrial Unit To Let in Meadowdale – Prime Access, Power & Functionality

Position your business in this 284m² industrial unit located in a secure, access-controlled estate in Meadowdale, Germiston. The warehouse offers excellent height, natural lighting, and an on-grade roller shutter door for smooth operations, supported by reliable three-phase power to accommodate various industrial needs.

An 80m² office component adds a polished, professional touch, ideal for day-to-day admin and client meetings. With two undercover parking bays, ample visitor parking, and 24-hour security, this unit combines practicality with peace of mind. Ideally

Features

Zoning Industrial

Interior

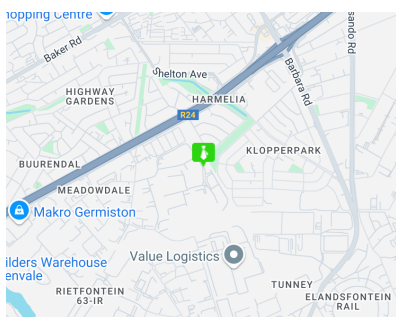
| | |
|------------------|-----|
| Air Conditioning | Yes |
| Power 3 Phase | Yes |
| Power Amps | 63 |

Exterior

| | |
|----------------------|-----|
| Security | Yes |
| Covered Parking Bays | 2 |
| Open Parking Bays | 10 |

Sizes

| | |
|-----------------|-------------------|
| Floor Size | 284m ² |
| Land Size | 300m ² |
| Building Height | 7m |



<https://www.newpointproperty.co.za>