



Brandon Whitehead

Candidate Property
Practitioner
Registered with PPRA
(FFC 121 151 9)

0817743977

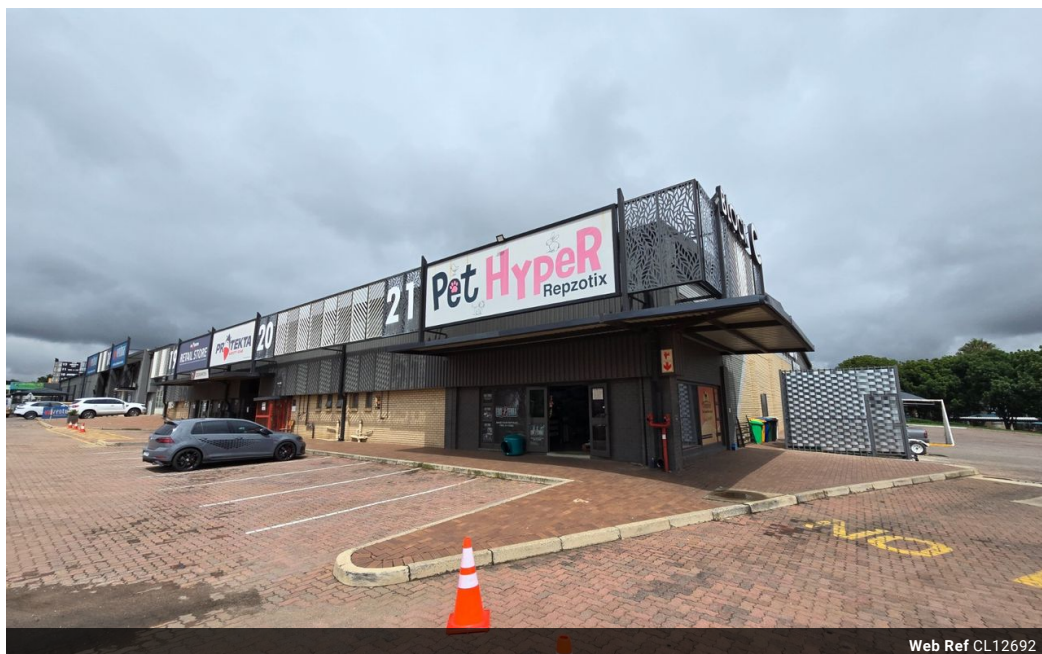
brandon@newpointproperty.co.za

Contact Head Office

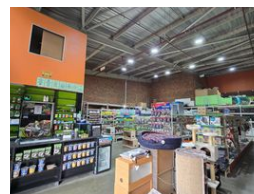
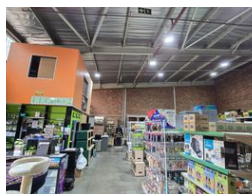
010 0354431

Office 40A
Eden Meadows Complex
1 Van Riebeeck Avenue
Greenstone
1609

363m² Warehouse To Let in Meadowdale



Web Ref CL12692



R34,485 pm

Gross Monthly Rental R34,485 Excl. VAT
Monthly Rates R100 Excl. VAT

Monthly Levy R100 Excl. VAT

 2  6

363m² Warehouse with Prime Main Road Exposure in Meadowdale

Positioned in the thriving Meadowdale, Germiston, this 363m² warehouse offers outstanding main road visibility—ideal for businesses looking to enhance their presence. Strategically located with direct access to the R24 and N12 highways, the property ensures seamless logistics and accessibility for clients and suppliers. With a flexible layout, it suits both warehousing and retail operations, catering to diverse business needs.

The property includes onsite parking for staff and visitors, ensuring convenience in a high-traffic commercial hub. Available for occupation from 1 March 2025, this is a prime opportunity to secure a well-connected and prominent space for your business.

Features

Zoning Industrial

Interior

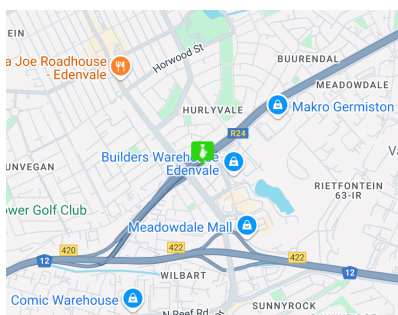
Air Conditioning	Yes
Power 3 Phase	Yes

Exterior

Security	Yes
Covered Parking Bays	2
Open Parking Bays	6

Sizes

Floor Size	363m ²
Land Size	363m ²
Building Height	6m



<https://www.newpointproperty.co.za>