



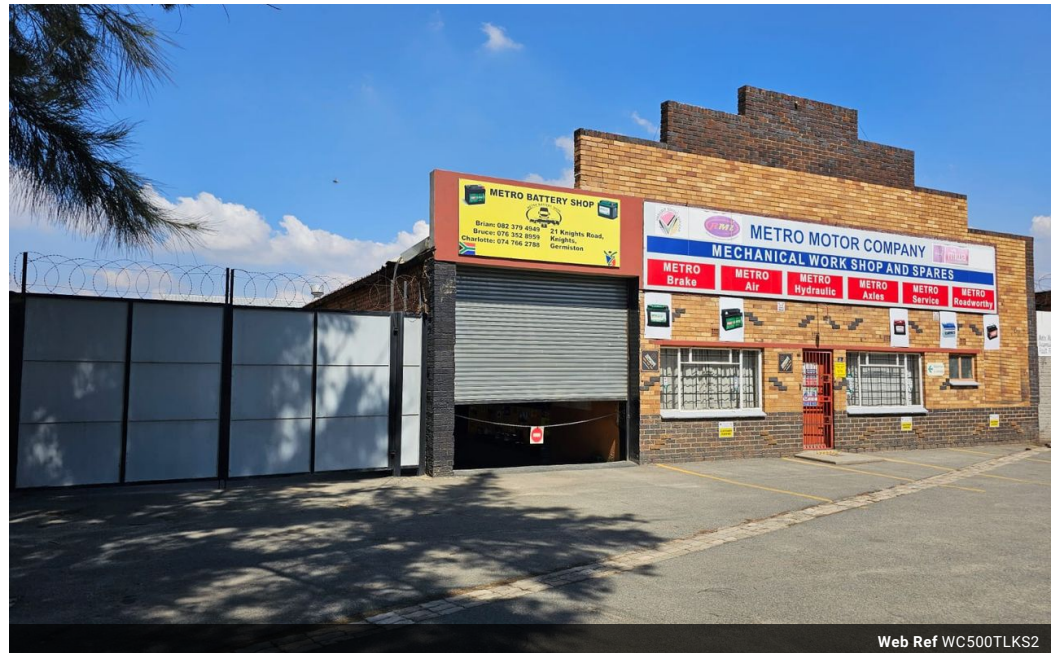
Robin Mulligan
Candidate Property
Practitioner
Registered with PPRA
(FFC 121 152 0)
0713556301

robin@newpointproperty.co.za

Contact Head Office

010 0354431

Office 40A
Eden Meadows Complex
1 Van Riebeeck Avenue
Greenstone
1609



Web Ref WC500TLKS2



R18,000 pm

Gross Monthly Rental R18,000 Excl. VAT



0



0

500m2 to let in Knights Germiston

This neat and well-maintained factory space is located in the sought-after area of Knights, Germiston. It is an ideal fit for engineering, fabrication, and mechanical services businesses. The property includes a generous amount of office space and provides separate staff ablutions for both male and female employees. A large road-facing roller door ensures easy access to and from the premises. The space features clean, well-maintained flooring and is equipped with phase power to support a variety of

Features

Zoning Industrial

Interior

Floor Loading Cap. 5 Tn/m²
Power 3 Phase Yes
Power Amps 150

Sizes

Floor Size 500m²
Land Size 600m²
Building Height 6m

