



William Christie
Candidate Property
Practitioner
Registered with PPRA
(FFC 121 152 2)
0740552244

william@newpointproperty.co.za

Contact Head Office

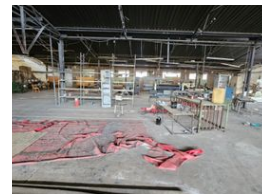
010 0354431

Office 40A
Eden Meadows Complex
1 Van Riebeeck Avenue
Greenstone
1609

1,750m² Factory To Let in Knights



Web Ref WC1750TLKS



R50,000 pm

Gross Monthly Rental R50,000 Excl. VAT



0



0

1750 Industrail factory to let in Knights with 400amps of power

This heavy manufacturing facility, located in the central area of Knights, Germiston, is an ideal investment opportunity for businesses in the engineering, fabrication, and industrial sectors. The property boasts a substantial power supply, with 400 amps of electricity, ensuring that it can accommodate high-powered machinery and equipment necessary for large-scale manufacturing operations.

The site includes a large office component, which is perfect for housing a sizable workforce. This area can comfortably support a large team, or it could be repurposed for additional storage space, depending on the operational needs of the new owner. The office area is well-integrated into the facility, offering flexibility for various business functions, from administration to logistics.

Features

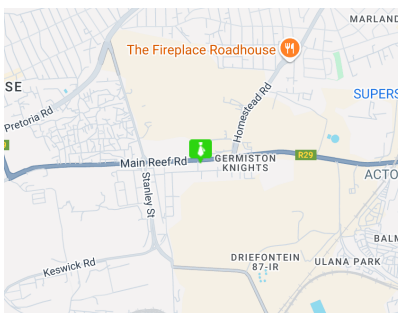
Zoning Industrial

Interior

Floor Loading Cap.	5 Tn/m ²
Power 3 Phase	Yes
Power Amps	400

Sizes

Floor Size	1,750m ²
Land Size	1,750m ²
Building Height	6m



<https://www.newpointproperty.co.za>