



Dane Davids
0844782022
dane@newpointproperty.co.za

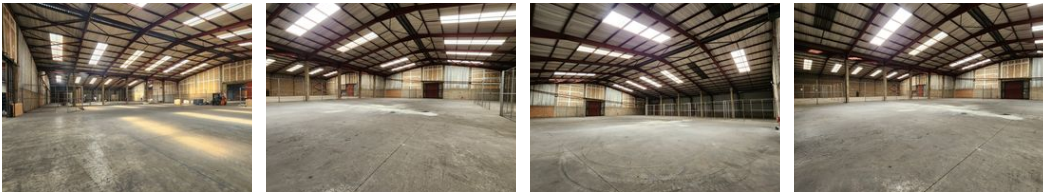
Contact Head Office
010 0354431

Office 40A
Eden Meadows Complex
1 Van Riebeeck Avenue
Greenstone
1609

8,000m² Warehouse To Let in Jupiter



Web Ref CL13523



R498,800 pm

Gross Monthly Rental R498,800 Excl. VAT

60 20

High-Volume 8,000m² Warehouse with Dock Access & Office Block in Germiston

Streamline your logistics and production with this expansive 8,000m² warehouse, ideally positioned in Germiston's busy industrial zone. Designed for scale and efficiency, the facility features five roller shutter doors—four equipped with dock levelers—generous internal height, and excellent natural light. A large paved yard with a weighbridge and multiple entry points ensures effortless truck access and optimized flow.

Enhancing the offering is a full double-storey office block complete with reception, open-plan workspaces, private offices, boardrooms, kitchens, a canteen, and staff ablutions. With covered parking and close proximity to major highways, this versatile property offers a turnkey solution for manufacturing, storage, or logistics operations. Enquire now to secure this premium

Features

Zoning Industrial

Interior

| | |
|------------------|-----|
| Air Conditioning | Yes |
| Power 3 Phase | Yes |
| Power Amps | 400 |

Exterior

| | |
|----------------------|-----|
| Security | Yes |
| Covered Parking Bays | 60 |
| Open Parking Bays | 20 |

Sizes

| | |
|------------|----------|
| Floor Size | 8,000m² |
| Land Size | 20,000m² |

