



Brandon Whitehead
Candidate Property Practitioner
Registered with PPRA
(FFC 121 151 9)
0817743977
brandon@newpointproperty.co.za

Contact Head Office
010 0354431

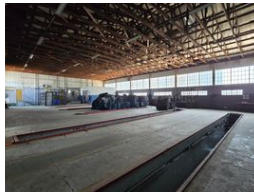
Office 40A
Eden Meadows Complex
1 Van Riebeeck Avenue
Greenstone
1609

1,800m² Workshop To Let in Henville

NEW



Web Ref BW18003CL



R210,000 pm

Gross Monthly Rental R210,000 Excl. VAT

10 300

High-Spec 1,800m² Truck Workshop with 7,200m² Yard – Ideal for Fleet Maintenance

Maximize your operational efficiency with this fully equipped 1,800m² truck workshop, perfectly designed for heavy vehicle servicing. Set on a massive 7,200m² paved yard, the property features 9 large work bays, 5 service pits, and a dedicated wash bay –ensuring smooth super-link access and optimal workflow for large-scale maintenance operations. A robust 200-amp three-phase power supply supports high-demand equipment, all within a secure, fenced perimeter.

The workshop enjoys ample natural light, creating a productive and well-ventilated work environment. Located near the Kraft Road on-ramp with direct access to the N12 highway, this facility is a strategic hub for logistics, transport, or fleet service businesses.

Features

Zoning Industrial

Interior

| | |
|------------------|-----|
| Air Conditioning | Yes |
| Power 3 Phase | Yes |
| Power Amps | 200 |

Exterior

| | |
|----------------------|-----|
| Covered Parking Bays | 10 |
| Open Parking Bays | 300 |

Sizes

| | |
|-----------------|---------|
| Floor Size | 1,800m² |
| Land Size | 9,000m² |
| Building Height | 8m |

