



**Brandon Whitehead**

Candidate Property Practitioner  
Registered with PPRA  
(FFC 121 151 9)

0817743977

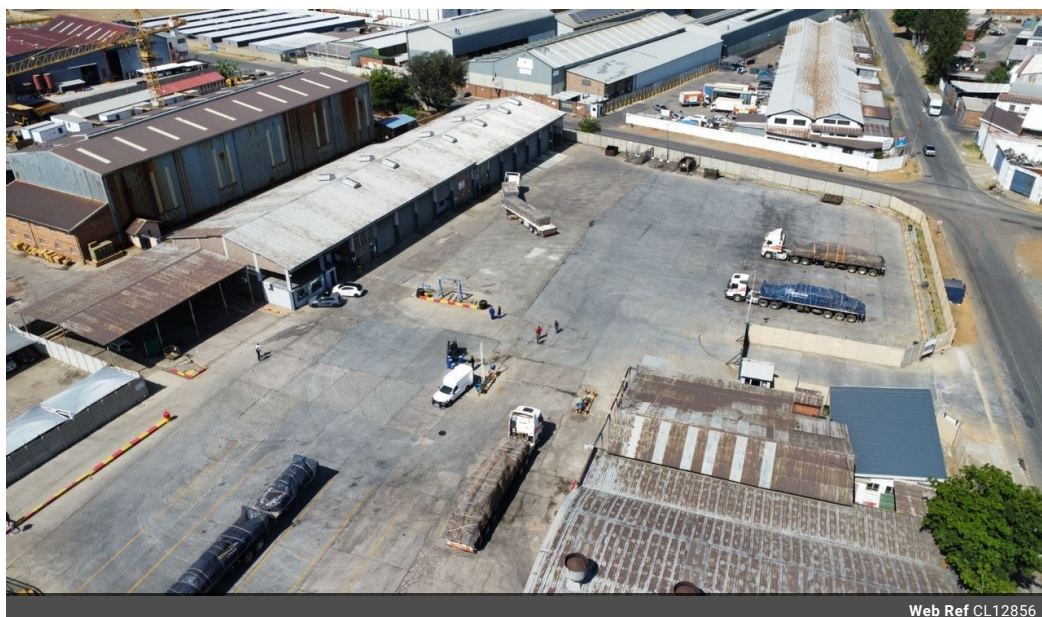
[brandon@newpointproperty.co.za](mailto:brandon@newpointproperty.co.za)

Contact Head Office

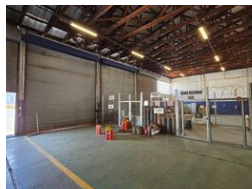
010 0354431

Office 40A  
Eden Meadows Complex  
1 Van Riebeeck Avenue  
Greenstone  
1609

1,800m<sup>2</sup> Workshop To Let in Henville



Web Ref CL12856



R210,000 pm

Gross Monthly Rental R210,000 Excl. VAT

10 300

## Top-Tier Truck Workshop with Massive Yard – Ideal for Fleet Maintenance Operations

Boost your fleet servicing capabilities with this fully equipped 1,800m<sup>2</sup> truck workshop, set on a sprawling 7,200m<sup>2</sup> paved yard tailored for large vehicle operations. Featuring 9 work bays, a wash bay, and 5 service pits, the facility is built for seamless super-link access and efficient workflow. A powerful 200-amp, three-phase supply supports intensive maintenance needs, while secure perimeter fencing ensures peace of mind.

Natural lighting floods the workspace, promoting a productive environment for your team. Strategically positioned near the Kraft Road on-ramp, the property offers quick access to the N12 highway, making it a prime location for logistics and transport businesses. Whether you're expanding or upgrading your operations, this high-spec facility delivers the space, infrastructure, and

## Features

**Zoning** Industrial

### Interior

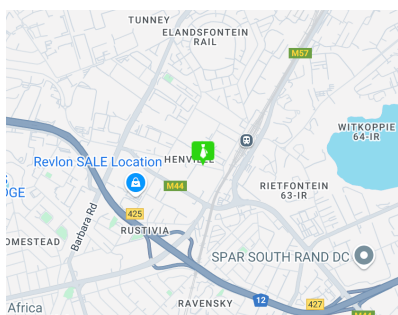
Air Conditioning	Yes
Power 3 Phase	Yes
Power Amps	200

### Exterior

Covered Parking Bays	10
Open Parking Bays	300

### Sizes

Floor Size	1,800m <sup>2</sup>
Land Size	9,000m <sup>2</sup>
Building Height	8m



<https://www.newpointproperty.co.za>