



**Robin Mulligan**  
Candidate Property  
Practitioner  
Registered with PPRA  
(FFC 121 152 0)  
**0713556301**

[robin@newpointproperty.co.za](mailto:robin@newpointproperty.co.za)

Contact Head Office

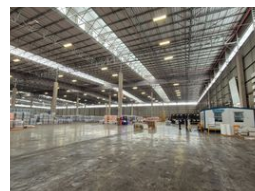
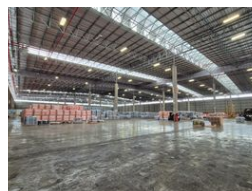
**010 0354431**

Office 40A  
Eden Meadows Complex  
1 Van Riebeeck Avenue  
Greenstone  
1609

21,491m<sup>2</sup> Warehouse To Let in Gosforth Park



Web Ref CL13039



**R1,862,624 pm**

**Gross Monthly Rental** R1,862,624 Excl. VAT

20 30

## Flagship 21,491m<sup>2</sup> A-Grade Logistics Facility To Let in Gosforth Park – Premium Cross-Docking Warehouse

This world-class A-Grade logistics warehouse in Gosforth Park offers 21,491m<sup>2</sup> of prime industrial space under roof, purpose-built for efficient distribution. Situated in a secure, access-controlled industrial park, the warehouse features 13.71m eave height, 20 roller shutter doors with cross-docking capability, 14 loading bays, 2 on-grade doors, 4 finger loading bays, and an ASIB-compliant sprinkler system, making it ideal for high-volume logistics. Excellent highway access and nearby public transport make this location a standout for operational convenience.

Positioned on a 42,374m<sup>2</sup> site, the property includes a vast paved yard with 4 entry/exit points, allowing full super-link access and circulation. The 1,039m<sup>2</sup> double-storey office block offers a professional reception, open-plan and executive offices, kitchen and

## Features

**Zoning** Industrial

### Interior

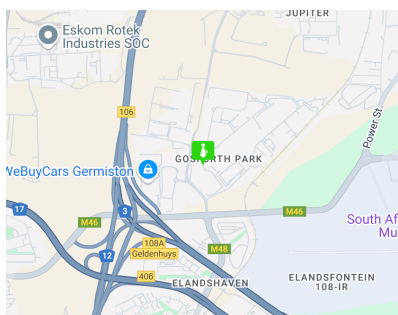
Air Conditioning	Yes
Power 3 Phase	Yes
Power Amps	600

### Exterior

Security	Yes
Covered Parking Bays	20
Open Parking Bays	30

### Sizes

Floor Size	21,491m <sup>2</sup>
Land Size	42,374m <sup>2</sup>
Building Height	15m



<https://www.newpointproperty.co.za>