



Robin Mulligan
Candidate Property
Practitioner
Registered with PPRA
(FFC 121 152 0)
0713556301

robin@newpointproperty.co.za

Contact Head Office

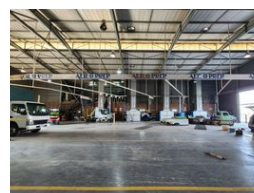
010 0354431

Office 40A
Eden Meadows Complex
1 Van Riebeeck Avenue
Greenstone
1609

1,710m² Warehouse To Let in Driehoek



Web Ref CL13964



R140,685 pm

Gross Monthly Rental R140,685 Excl. VAT

30 50

1,710m² Warehouse with Massive Yard & Offices To Let in Driehoek, Germiston

Enhance your logistics with this 1,710m² industrial property in Driehoek. The 1,200m² warehouse features great height, strong three-phase power, and a drive-through layout with multiple roller doors—ideal for efficient operations. The 2,000m² paved yard includes four entrances for smooth truck flow and a dedicated canopy wash bay.

A 500m² double-storey office block offers a reception, boardroom, private and open-plan offices, and full staff amenities. With shaded parking, secure access, and a strategic location near major highways, this site is perfect for transport, distribution, or light

Features

Zoning Industrial

Interior

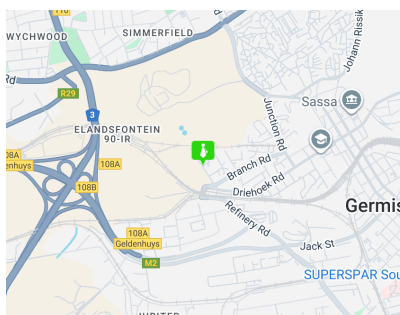
| | |
|------------------|-----|
| Air Conditioning | Yes |
| Power 3 Phase | Yes |
| Power Amps | 250 |

Exterior

| | |
|----------------------|----|
| Covered Parking Bays | 30 |
| Open Parking Bays | 50 |

Sizes

| | |
|-----------------|---------------------|
| Floor Size | 1,710m ² |
| Land Size | 4,000m ² |
| Building Height | 8m |



<https://www.newpointproperty.co.za>