



Robin Mulligan
Candidate Property
Practitioner
Registered with PPRA
(FFC 121 152 0)
0713556301

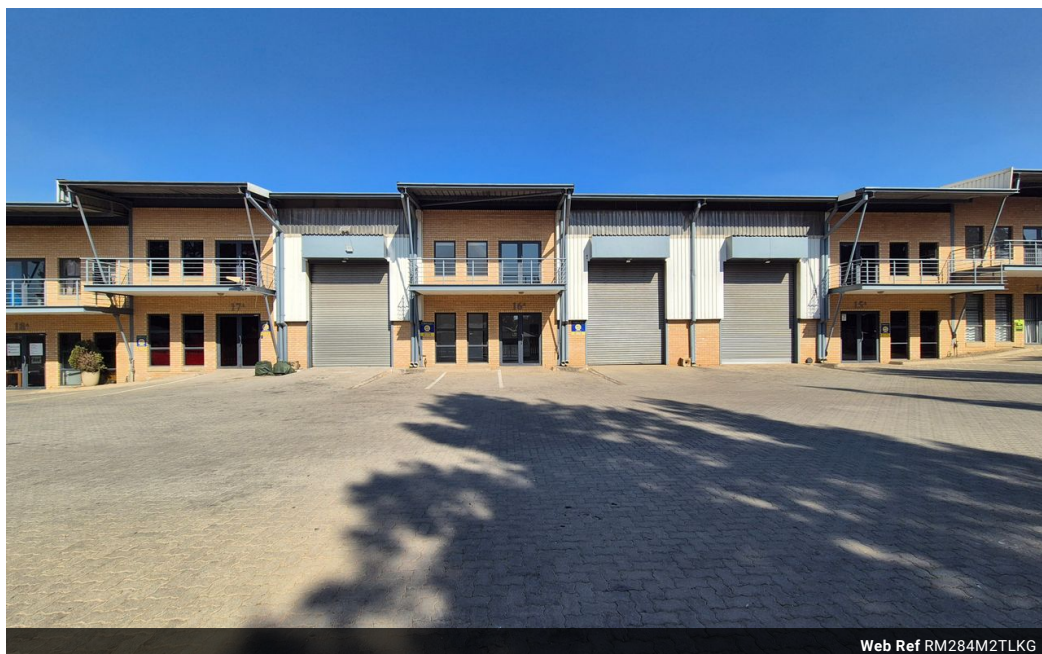
robin@newpointproperty.co.za

Contact Head Office

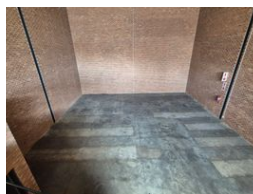
010 0354431

Office 40A
Eden Meadows Complex
1 Van Riebeeck Avenue
Greenstone
1609

284m² Warehouse To Let in Driehoek



Web Ref RM284M2TLKG



R18,460 pm

Gross Monthly Rental R18,460 Excl. VAT

4 6

Very neat and secure 284m² Warehouse available To Let in Driehoek, Germiston.

Very neat and secure 284m² Warehouse available To Let in Driehoek, Germiston. This property is placed in the perfect location with easy access to all major highways, shopping facilities and all modes of public transport. The unit is placed within an Industrial park with 24 hour security and full access control.

The warehouse offers good height with natural light and a 3 phase power supply.

The office component is very neat and well sized and offers a large open plan office area downstairs with a small kitchen and private toilet. Upstairs there is a solid mezzanine level which can be used as additional office space or alternatively added warehousing. There is ample parking space available for both staff and visitors. There are both open and covered parking options

Features

Zoning Industrial

Interior

Power 3 Phase Yes
Power Amps 80

Exterior

Security Yes
Covered Parking Bays 4
Open Parking Bays 6

Sizes

Floor Size 284m²
Land Size 400m²
Building Height 7m



<https://www.newpointproperty.co.za>