



Robin Mulligan
Candidate Property
Practitioner
Registered with PPRA
(FFC 121 152 0)
0713556301

robin@newpointproperty.co.za

Contact Head Office

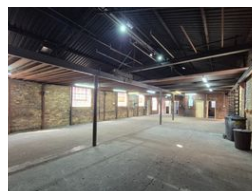
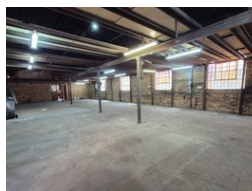
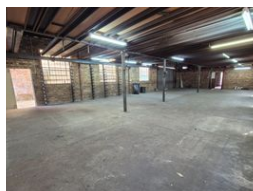
010 0354431

Office 40A
Eden Meadows Complex
1 Van Riebeeck Avenue
Greenstone
1609

300m² Warehouse To Let in Driehoek



Web Ref CL13456



R15,000 pm

Gross Monthly Rental R15,000 Excl. VAT

4 6

Versatile 300m² Freestanding Warehouse To Let in Germiston – With Crane, Yard & Mezzanine

This well-positioned 300m² freestanding warehouse in Germiston offers a flexible and practical solution for small-scale industrial operations. Centrally located with quick access to major highways, public transport, and nearby retail, it's ideal for light manufacturing, fabrication, or storage. The facility features good internal height, ample natural light, a 3-phase power supply, a 2-ton crane, and a mezzanine level for additional storage. A private yard with its own access can serve as extra workspace, secure parking, or storage.

The office component is clean and functional, with a spacious open-plan area suitable for a reception, admin, or boardroom. Two shaded carports are available for staff or visitors. With great accessibility and adaptable features, this warehouse offers excellent

Features

Zoning Industrial

Interior

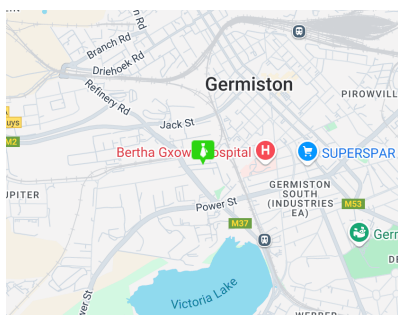
| | |
|---------------|-----|
| Power 3 Phase | Yes |
| Power Amps | 125 |

Exterior

| | |
|----------------------|---|
| Covered Parking Bays | 4 |
| Open Parking Bays | 6 |

Sizes

| | |
|-----------------|-------------------|
| Floor Size | 300m ² |
| Land Size | 500m ² |
| Building Height | 5m |



<https://www.newpointproperty.co.za>