



Robin Mulligan
Candidate Property
Practitioner
Registered with PPRA
(FFC 121 152 0)

0713556301

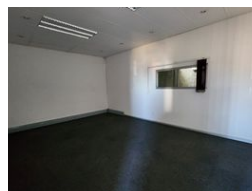
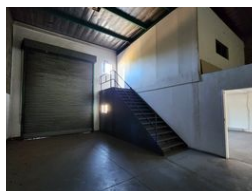
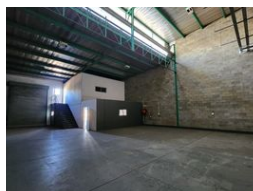
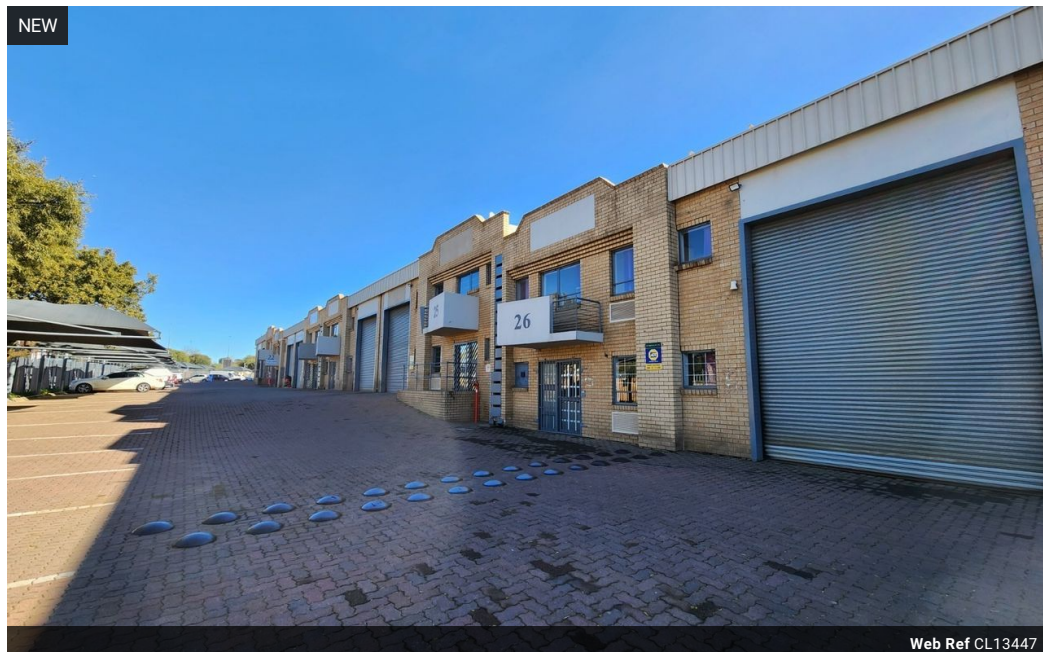
robin@newpointproperty.co.za

Contact Head Office

010 0354431

Office 40A
Eden Meadows Complex
1 Van Riebeeck Avenue
Greenstone
1609

265m² Warehouse To Let in Driehoek



R17,490 pm

Gross Monthly Rental R17,490 Excl. VAT

4 6

Prime 265m² Industrial Unit with Offices in Driehoek, Germiston

Unlock a strategic location for your business with this immaculate 265m² warehouse, situated in a secure, access-controlled complex in Driehoek. Designed for operational efficiency, the unit features excellent height, a large roller shutter door, ample natural light, and 63 amps of three-phase power—ideal for light manufacturing, storage, or distribution. With easy truck access and proximity to major highways, logistics are streamlined for maximum productivity.

The double-storey office component includes a welcoming reception, open-plan workspaces, a kitchenette, and ablution facilities on both levels—providing a comfortable and professional environment for your team. High visibility from a busy road and plenty of

Features

Zoning Industrial

Interior

Power 3 Phase	Yes
Power Amps	63

Exterior

Security	Yes
Covered Parking Bays	4
Open Parking Bays	6

Sizes

Floor Size	265m ²
Land Size	365m ²
Building Height	7m



<https://www.newpointproperty.co.za>