



**Robin Mulligan**  
Candidate Property  
Practitioner  
Registered with PPRA  
(FFC 121 152 0)  
**0713556301**

[robin@newpointproperty.co.za](mailto:robin@newpointproperty.co.za)

Contact Head Office

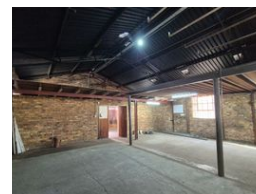
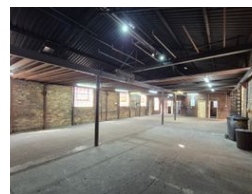
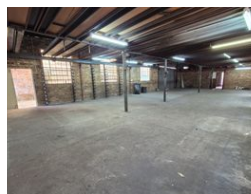
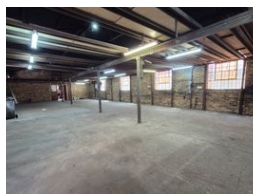
**010 0354431**

Office 40A  
Eden Meadows Complex  
1 Van Riebeeck Avenue  
Greenstone  
1609

300m<sup>2</sup> Warehouse To Let in Driehoek



Web Ref RM300TLGERM



**R15,000 pm**

**Gross Monthly Rental** R15,000 Excl. VAT

4 6

300m<sup>2</sup> Freestanding Warehouse available To Let in Germiston.

300m<sup>2</sup> Freestanding Warehouse available To Let in Germiston. This property is centrally located and offers quick, easy access to all major highways with public transport and shopping facilities available within walking distance from the warehouse. The warehouse/factory offers good height with natural light and a 3 phase power supply. There is added mezzanine level for extra storage space and also a 2 ton crane in one section of the factory. There is also a private yard with its own access that can be used as additional workshop or storage space or alternatively used for secure parking.

The office component is neat and offers a large open plan office area suitable for a reception or boardroom space, the property

## Features

**Zoning** Industrial

### Interior

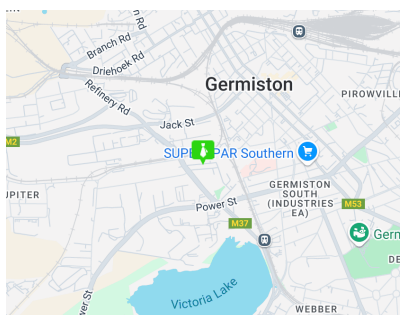
Power 3 Phase	Yes
Power Amps	125

### Exterior

Covered Parking Bays	4
Open Parking Bays	6

### Sizes

Floor Size	300m <sup>2</sup>
Land Size	500m <sup>2</sup>
Building Height	5m



<https://www.newpointproperty.co.za>