



Robin Mulligan
Candidate Property
Practitioner
Registered with PPRA
(FFC 121 152 0)
0713556301

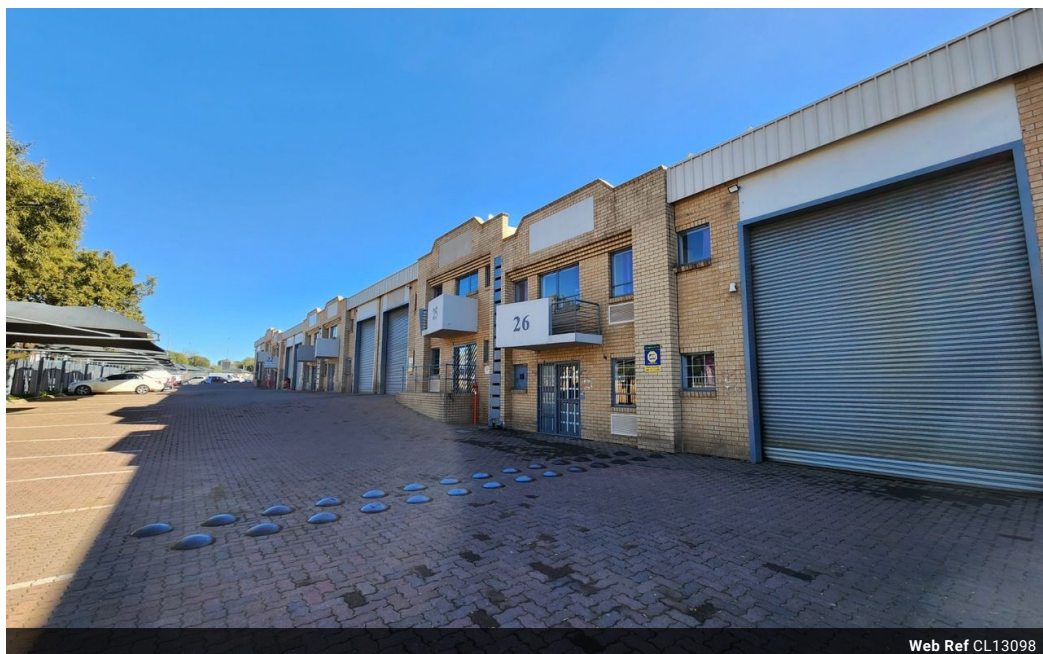
robin@newpointproperty.co.za

Contact Head Office

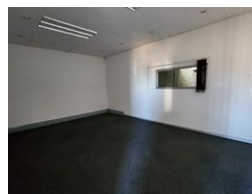
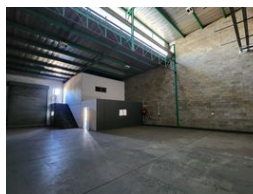
010 0354431

Office 40A
Eden Meadows Complex
1 Van Riebeeck Avenue
Greenstone
1609

265m² Warehouse To Let in Driehoek



Web Ref CL13098



R17,490 pm

Gross Monthly Rental R17,490 Excl. VAT

4 6

Immaculate 265m² Warehouse to Let in Germiston – Secure Park with Prime Accessibility

This pristine 265m² warehouse is now available to let in a secure industrial complex in Driehoek, Germiston. With 24/7 security, controlled access, and excellent proximity to major highways, the location offers smooth truck access and efficient logistics. The unit boasts great height, abundant natural light, a large roller shutter door, and a 63-amp three-phase power supply—ideal for manufacturing, storage, or distribution.

The double-storey office section includes a professional reception, open-plan offices, a kitchenette, and ablutions on both levels. The property enjoys high visibility from the main road and offers ample staff and visitor parking. This is a well-rounded industrial

Features

Zoning Industrial

Interior

Power 3 Phase	Yes
Power Amps	63

Exterior

Security	Yes
Covered Parking Bays	4
Open Parking Bays	6

Sizes

Floor Size	265m ²
Land Size	365m ²
Building Height	7m

