



Robin Mulligan
Candidate Property
Practitioner
Registered with PPRA
(FFC 121 152 0)
0713556301

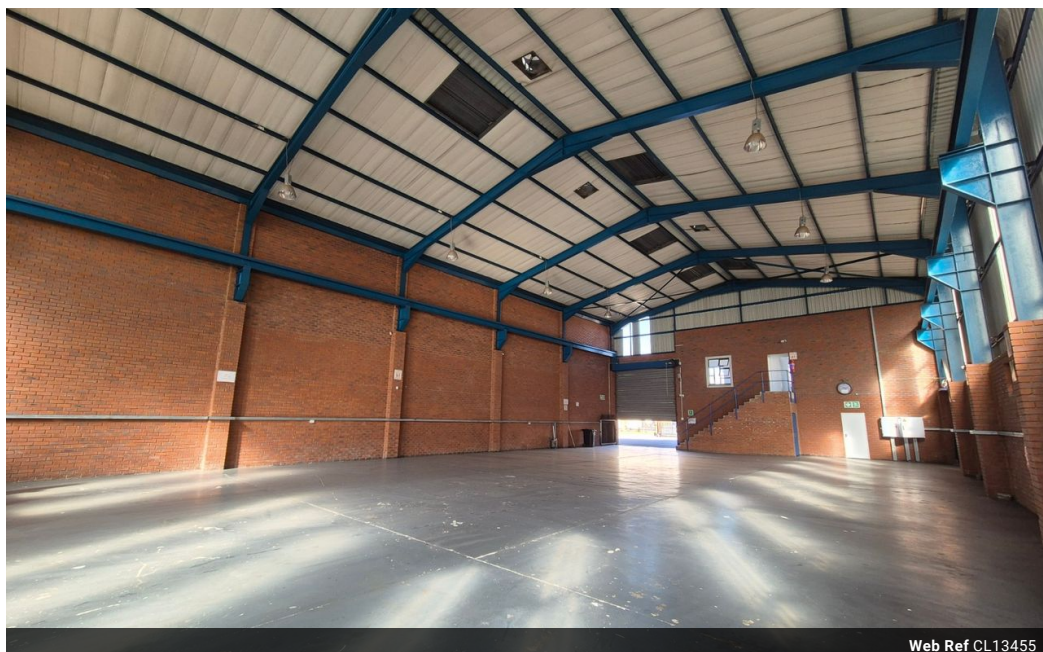
robin@newpointproperty.co.za

Contact Head Office

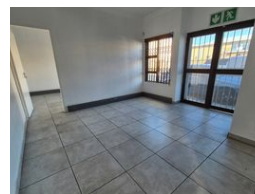
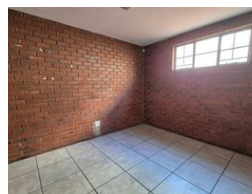
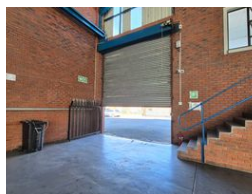
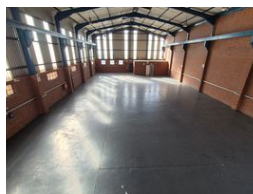
010 0354431

Office 40A
Eden Meadows Complex
1 Van Riebeeck Avenue
Greenstone
1609

630m² Warehouse To Let in Airport Park



Web Ref CL13455



R50,000 pm

Gross Monthly Rental R50,000 Excl. VAT

4 8

Well-Equipped 630m² Warehouse To Let Near Rand Airport – Ideal for Industrial Operations

Position your business in the heart of Germiston's Airport Park with this 630m² warehouse, ideally located near Rand Airport and offering quick access to major highways. The unit boasts excellent height, abundant natural light, and a robust 160-amp three-phase power supply—ideal for light manufacturing, storage, or distribution. A large roller shutter door and small private yard ensure smooth truck access and operational flow. Added amenities include a canteen, change rooms, showers, and ablutions.

The double-storey office component is neat and functional, featuring a professional reception area and a mix of private offices across both levels, along with separate male and female restrooms and a kitchen. Secure on-site parking is available for staff and

Features

Zoning Industrial

Interior

Power 3 Phase	Yes
Power Amps	160

Exterior

Covered Parking Bays	4
Open Parking Bays	8

Sizes

Floor Size	630m ²
Land Size	850m ²
Building Height	8m

