



Robin Mulligan
Candidate Property
Practitioner
Registered with PPRA
(FFC 121 152 0)
0713556301

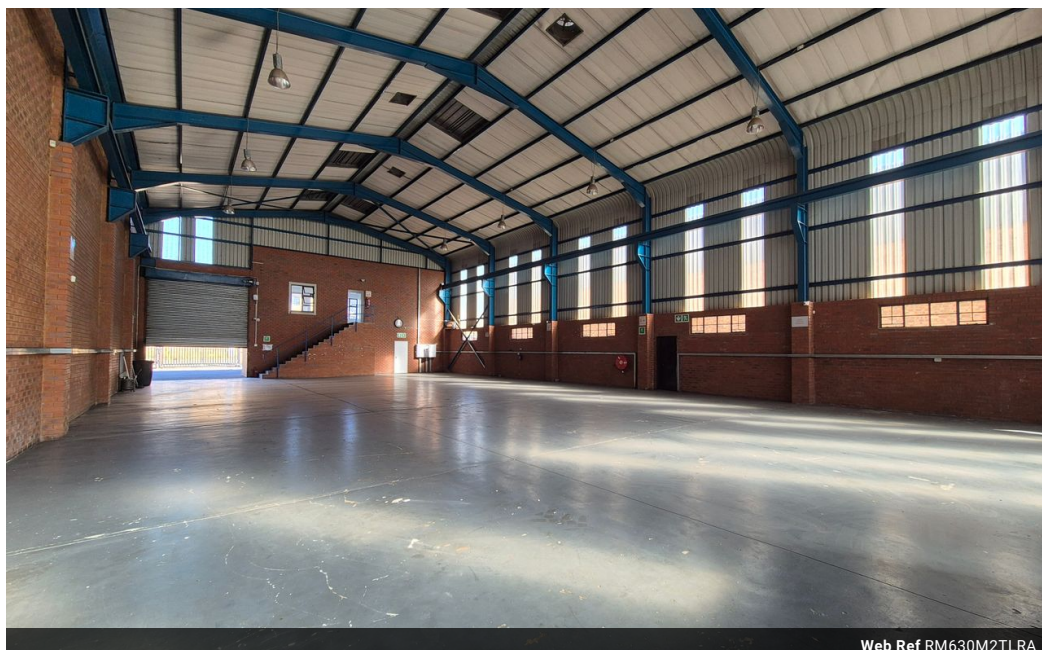
robin@newpointproperty.co.za

Contact Head Office

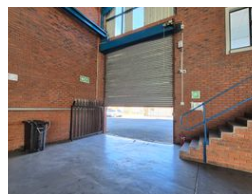
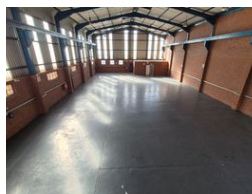
010 0354431

Office 40A
Eden Meadows Complex
1 Van Riebeeck Avenue
Greenstone
1609

630m² Warehouse To Let in Airport Park



Web Ref RM630M2TLRA



R50,000 pm

Gross Monthly Rental R50,000 Excl. VAT

4 8

630m² Freestanding Warehouse available To Let in Airport Park, Germiston.

630m² Warehouse available To Let in Airport Park, Germiston. This warehouse is centrally located in Germiston near Rand Airport and offers easy access to all major highways. The warehouse offers excellent height with great natural light and a strong 3 phase power supply consisting of 160 amps. There is a large roller shutter door with a small private yard area allowing for excellent truck access and flow. The warehouse also features a full canteen area, with change rooms, ablutions and shower facilities.

The office component is very neat and well sized, its placed over two levels and includes a welcoming reception area with individual office spaces available on both levels. There are both male and female ablutions and a small kitchen area in place. This

Features

Zoning Industrial

Interior

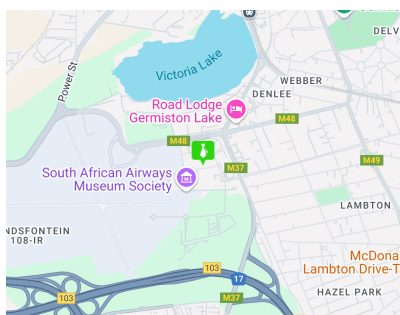
Power 3 Phase	Yes
Power Amps	160

Exterior

Covered Parking Bays	4
Open Parking Bays	8

Sizes

Floor Size	630m ²
Land Size	850m ²
Building Height	8m



<https://www.newpointproperty.co.za>