



Robin Mulligan
Candidate Property
Practitioner
Registered with PPRA
(FFC 121 152 0)
0713556301

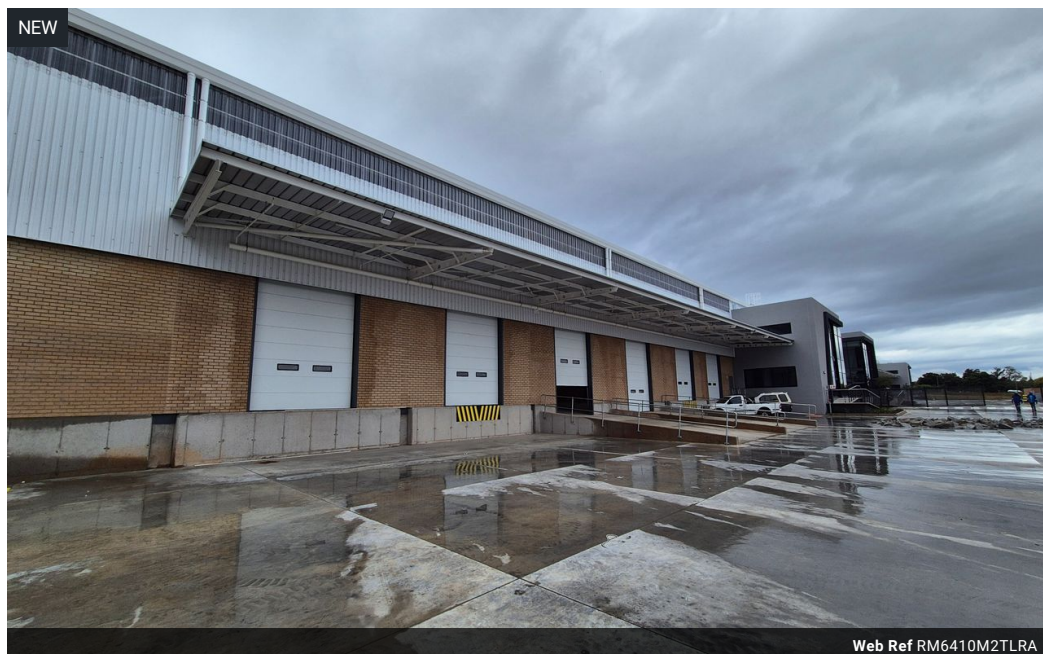
robin@newpointproperty.co.za

Contact Head Office

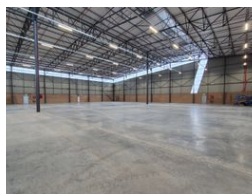
010 0354431

Office 40A
Eden Meadows Complex
1 Van Riebeeck Avenue
Greenstone
1609

6,410m² Warehouse To Let in Airport Park



Web Ref RM6410M2TLRA



R608,950 pm

Gross Monthly Rental R608,950 Excl. VAT



0



10

AAA Grade 6 410m² Warehouse available To Let in Rand Airport Commercial Park with highway exposure.

This modern 6,410m² warehouse in the well-known Rand Airport Commercial Park is now ready for occupation. It has great visibility from the main road and N17 highway, with easy access to major transport routes—perfect for smooth logistics and deliveries. The location also offers unique views of Rand Airport. The park has 24-hour security, strict access control, and surveillance for a safe work environment.

Designed for efficiency, the warehouse features excellent height for extra storage, lots of natural light, and a strong three-phase power supply. It has four large roller doors, including dock-level and ground-level access, which are ideal for large delivery trucks. A full sprinkler system with pumps and tanks ensures fire safety. The office component is modern and flexible, so it can be tailored

Features

Zoning Industrial

Interior

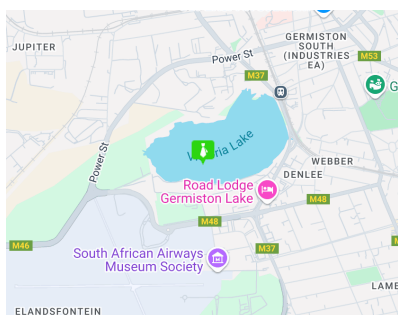
Air Conditioning	Yes
Power 3 Phase	Yes
Power Amps	300

Exterior

Security	Yes
Open Parking Bays	10

Sizes

Floor Size	6,410m ²
Land Size	11,000m ²
Building Height	12m



<https://www.newpointproperty.co.za>