



Marcel Carneiro
Candidate Property Practitioner
Registered with PPRA
(FFC 120 075 3)

0846932233

marcel@newpointproperty.co.za

Contact Head Office

010 0354431

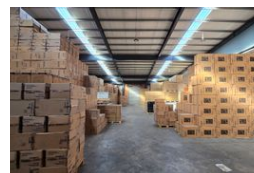
Office 40A
Eden Meadows Complex
1 Van Riebeeck Avenue
Greenstone
1609

692m² Warehouse To Let in Sebenza

NEW



Web Ref MC692TLS



R38,115 pm

Gross Monthly Rental R38,115 Excl. VAT
Monthly Rates R1 Excl. VAT

Monthly Levy R1 Excl. VAT



Neat 692sqm warehouse in a small secure park to let in Sebenza

This neat 692sqm industrial warehouse is available for lease in a small secure complex within Sebenza's sought-after industrial hub. The warehouse features two large roller shutter doors at the front and back of the building with good height to the eaves and abundant natural light. This property has 63amps of three phase power available.

The double volume office component includes two open plan offices with male and female ablutions as well as a kitchenette. Ample secure parking is available for both staff and visitors. Conveniently located with easy access to O.R. Tambo International Airport and major highways such as the N3, R21, and R24, this property is perfect for businesses seeking a well-equipped and

Features

Zoning Industrial

Interior

Floor Loading Cap. 1 Tn/m²
Power 3 Phase Yes
Power Amps 63

Exterior

Security Yes
Open Parking Bays 4

Sizes

Floor Size 692m²
Land Size 692m²
Building Height 7m

