



Marcel Carneiro
Candidate Property
Practitioner
Registered with PPRA
(FFC 120 075 3)
0846932233

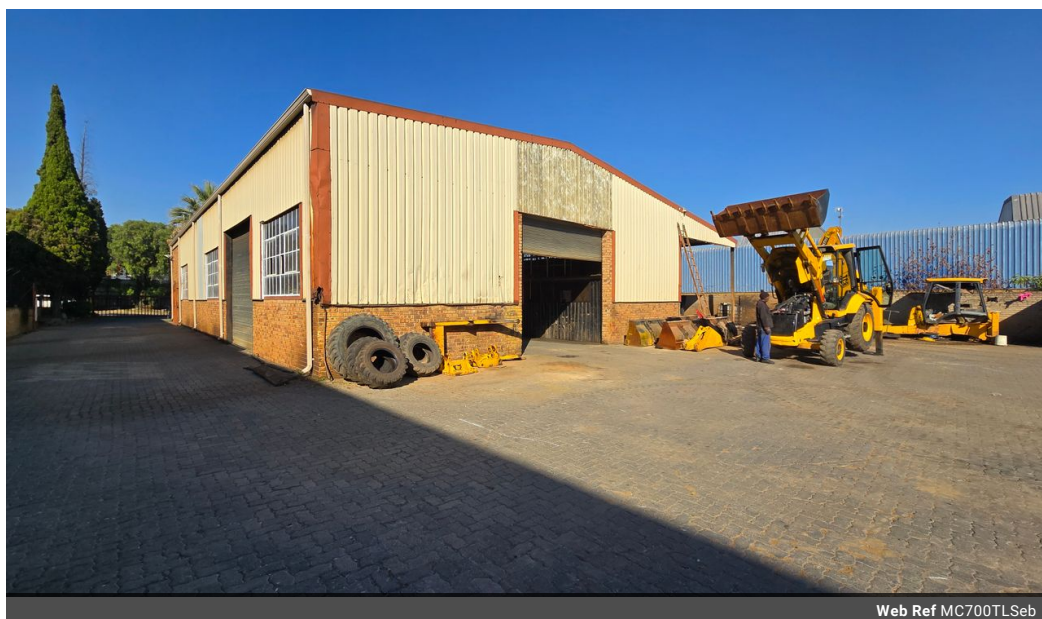
marcel@newpointproperty.co.za

Contact Head Office

010 0354431

Office 40A
Eden Meadows Complex
1 Van Riebeeck Avenue
Greenstone
1609

700m² Warehouse To Let in Sebenza



Web Ref MC700TLSeb



R45,000 pm

Gross Monthly Rental R45,000 Excl. VAT
Monthly Rates R1 Excl. VAT

Monthly Levy R1 Excl. VAT

2 10

Neat freestanding 700sqm Industrial warehouse with a large yard to let in Sebenza

This neat 700sqm freestanding industrial warehouse with 1000sqm yard is available to let and is located in the sought-after industrial node of Sebenza, Edenvale. The warehouse has good height to the eaves with excellent natural light throughout the work area and is accessed through two large roller shutter doors on the side and back of the building. There are ablutions with showers inside the warehouse as well as a wash bay with a grease trap.

The double story office component comprises of a welcoming reception area, individual offices, ablutions and kitchen. There is three phase power of 100amps available to the unit. This property has easy access to O.R. Tambo International Airport as well as

Features

Zoning Industrial

Interior

Floor Loading Cap. 1 Tn/m²
Power 3 Phase Yes
Power Amps 100

Exterior

Covered Parking Bays 2
Open Parking Bays 10

Sizes

Floor Size 700m²
Land Size 2,066m²
Building Height 5m



<https://www.newpointproperty.co.za>