



Nathan Broodryk
 0844223210
nathan@newpointproperty.co.za

Contact Head Office

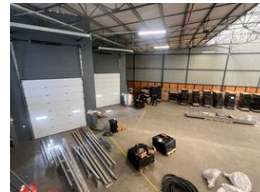
010 0354431

Office 40A
 Eden Meadows Complex
 1 Van Riebeeck Avenue
 Greenstone
 1609

1,100m² Warehouse To Let in Louwlandia



Web Ref NB11000MIPU1



R10,945,015 pm

Gross Monthly Rental R10,945,015 Excl. VAT

0 15

1100sqm warehouse with offices on a main rd

Situated off the well-known Old Johannesburg Road, this 1100sqm warehouse is nestled within a safe and secure industrial estate, offering both peace of mind and convenience for any business operation. The facility boasts 856sqm of high-volume warehouse space, ideal for storage, distribution, or light manufacturing. With two on-grade loading bays, the property ensures smooth logistics and easy access for trucks and deliveries. The warehouse is fitted with 3-phase power, catering to equipment with higher energy demands and allowing for seamless industrial processes.

Complementing the warehouse is 120sqm of well-maintained office space, perfect for administrative functions and day-to-day management. The offices are designed for efficiency, providing a comfortable working environment for staff and management

Features

Zoning Industrial

Interior

Floor Loading Cap.	1 Tn/m ²
Power 3 Phase	Yes
Power Amps	63

Exterior

Security	Yes
Open Parking Bays	15

Sizes

Floor Size	1,100m ²
Land Size	30,000m ²