



Nathan Broodryk
0844223210
nathan@newpointproperty.co.za

Contact Head Office

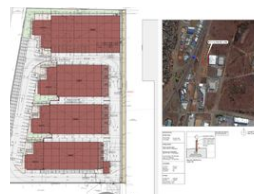
010 0354431

Office 40A
Eden Meadows Complex
1 Van Riebeeck Avenue
Greenstone
1609

1,318m² Warehouse To Let in Louwlandia



Web Ref CL13104



R143,662 pm

Gross Monthly Rental R143,662 Excl. VAT



AAA-Grade Warehouse Available in Sought-After Louwlandia Business Park

Position your business for success with this premium 1,318m² warehouse located in the highly secure Louwlandia Business Park. The space is designed with a practical 70/30 warehouse-to-office split and offers bright, functional interiors ideal for storage, distribution, or light manufacturing. The warehouse benefits from abundant natural light and features a large rear roller shutter door for seamless truck access and smooth operations.

With 3-phase power and easy connectivity to major arterial routes, this facility is built to support demanding business needs while ensuring logistical efficiency. The park offers top-tier security, giving you peace of mind in a strategic and professional

Features

Zoning Industrial

Interior

Floor Loading Cap.	1 Tn/m ²
Air Conditioning	Yes
Power 3 Phase	Yes

Exterior

Security	Yes
Open Parking Bays	4

Sizes

Floor Size	1,318m ²
Land Size	30,000m ²

