



Nathan Broodryk
0844223210
nathan@newpointproperty.co.za

Contact Head Office

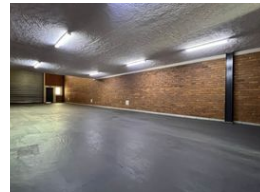
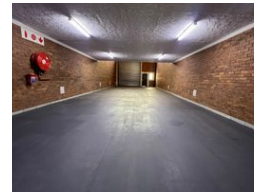
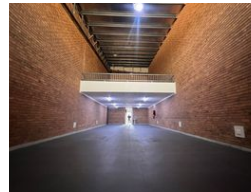
010 0354431

Office 40A
Eden Meadows Complex
1 Van Riebeeck Avenue
Greenstone
1609

355m² Warehouse To Let in Hennospark



Web Ref NB355U10JBPre1



R37,997 pm

Gross Monthly Rental R37,997 Excl. VAT

0 4

355sqm warehouse with offices in a secure park

This 355m² warehouse is located in a secure, modern business park that provides 24-hour security, ensuring a safe working environment. The warehouse offers a versatile open-plan layout with a mezzanine level, perfect for additional storage or extended operations. A 5-meter-high roller door allows for smooth and efficient loading and unloading, while 63 amps of three-phase power make the property suitable for light industrial activities and businesses with higher energy demands.

Complementing the warehouse, the property includes three levels of well-designed office space, providing ample room for administration, management, and client-facing operations all in one location. The business park is professionally managed and

Features

Zoning Industrial

Interior

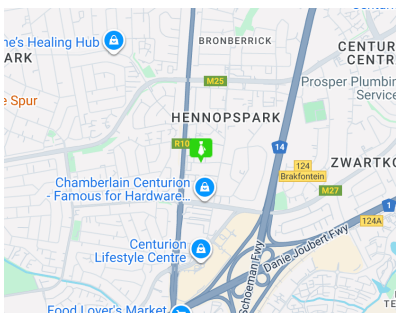
Floor Loading Cap. 1 Tn/m²
Power 3 Phase Yes
Power Amps 63

Exterior

Security Yes
Open Parking Bays 4

Sizes

Floor Size 355m²
Land Size 30,000m²



<https://www.newpointproperty.co.za>