



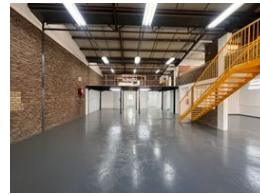
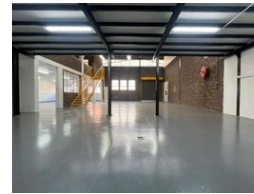
Nathan Broodryk
0844223210
nathan@newpointproperty.co.za

Contact Head Office

010 0354431

Office 40A
Eden Meadows Complex
1 Van Riebeeck Avenue
Greenstone
1609

640m² Warehouse To Let in Hennospark



R47,800 pm

Gross Monthly Rental R47,800 Excl. VAT



640sqm warehouse with offices in a secure park

Located within the secure, well-maintained Hennospark Industrial Park, this 640m² corner unit seamlessly combines functional warehouse space with a professional office component. The ground floor opens to a welcoming reception area, leading to a thoughtfully designed office section featuring private offices, a kitchen, and staff bathrooms—ideal for supporting smooth daily operations. Positioned in a park with 24/7 security and controlled access, the property offers both operational efficiency and peace of mind.

The warehouse is designed to optimise workflow, with a spacious dispatch area and several drywall-partitioned rooms that can be adapted for sorting, storage, or specialised processes. Powered by 100 amps of three-phase electricity, the unit is well-suited for

Features

Zoning Industrial

Interior

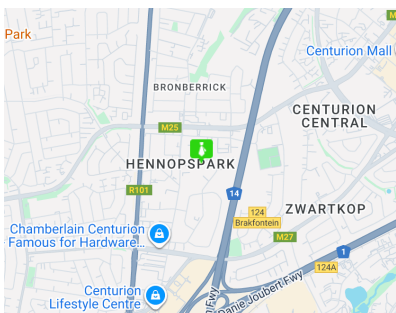
Floor Loading Cap.	1 Tn/m ²
Power 3 Phase	Yes
Power Amps	150

Exterior

Covered Parking Bays	4
Open Parking Bays	4

Sizes

Floor Size	640m ²
Land Size	2,000m ²



<https://www.newpointproperty.co.za>