

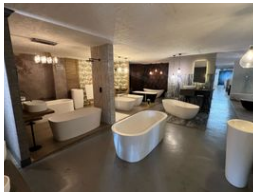


Nathan Broodryk
0844223210
nathan@newpointproperty.co.za

Contact Head Office
010 0354431

Office 40A
Eden Meadows Complex
1 Van Riebeeck Avenue
Greenstone
1609

607m² Warehouse To Let in Hennospark



R66,278 pm

Gross Monthly Rental R66,278 Excl. VAT

0 4

Pristine 607sqm warehouse with offices in a secure park

Set your business up for success with this versatile 607m² warehouse located in the well-established Hennospark Business Park. Currently operating as a high-end bathroom showroom, the property is perfectly suited for light industrial, retail, storage, or distribution use. Featuring high ceilings, a wide roller shutter door, and an open-plan layout, the space supports smooth workflow and operational efficiency. With secure, access-controlled entry and ample on-site parking, it offers a professional and safe environment for both daily operations and customer visits.

The warehouse also boasts a modern three-level office component, starting with a stylish reception area on the ground floor. The upper floors include a combination of private offices and open-plan workspaces, each level equipped with its own kitchenette

Features

Zoning		Industrial			
Interior		Exterior		Sizes	
Floor Loading Cap.	1 Tn/m²	Security	Yes	Floor Size	607m²
Power 3 Phase	Yes	Open Parking Bays	4	Land Size	30,000m²
Power Amps	63				

