



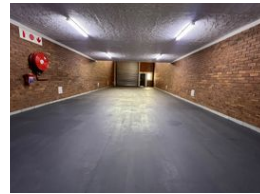
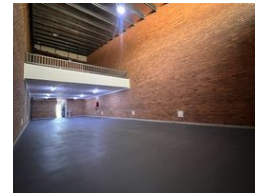
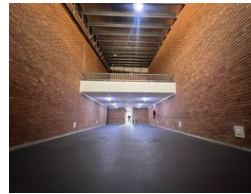
Nathan Broodryk
 0844223210
nathan@newpointproperty.co.za

Contact Head Office

010 0354431

Office 40A
 Eden Meadows Complex
 1 Van Riebeeck Avenue
 Greenstone
 1609

355m² Warehouse To Let in Hennospark



R37,997 pm

Gross Monthly Rental R37,997 Excl. VAT

0 0

Pristine 355sqm warehouse with offices in a secure business park

This 355sqm warehouse is situated within a secure, modern business park that offers 24-hour security for peace of mind. The warehouse features a spacious open-plan layout with a mezzanine level, providing additional usable space for storage or operations. Access is facilitated by a 5-meter high roller door, ideal for efficient loading and unloading of goods. The property is equipped with 63 amps of three-phase power, catering to businesses with high energy requirements or light industrial operations.

In addition to the warehouse space, the property boasts three floors of well-appointed office areas, making it an ideal solution for businesses needing both operational and administrative facilities under one roof. The business park is professionally managed,

Features

Zoning Industrial

Interior

Floor Loading Cap. 1 Tn/m²
 Power 3 Phase Yes
 Power Amps 63

Exterior

Security Yes

Sizes

Floor Size 355m²
 Land Size 20,000m²

