

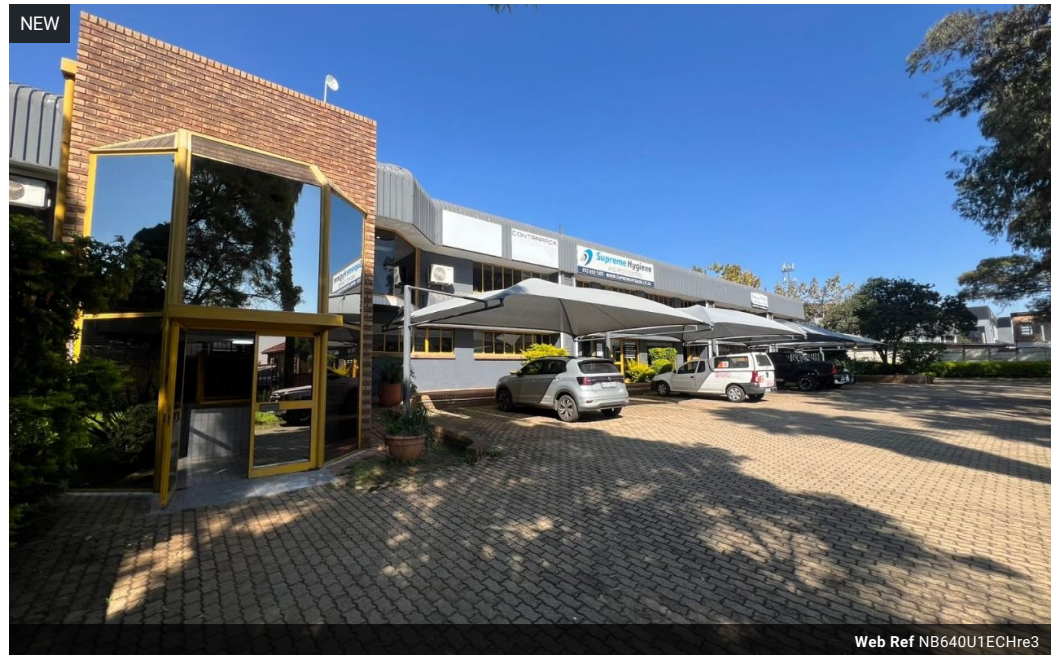


Nathan Broodryk
 0844223210
nathan@newpointproperty.co.za

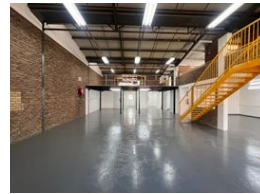
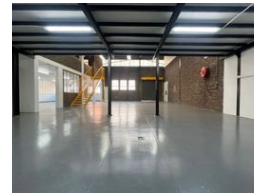
Contact Head Office
 010 0354431

Office 40A
 Eden Meadows Complex
 1 Van Riebeeck Avenue
 Greenstone
 1609

640m² Warehouse To Let in Hennospark



Web Ref NB640U1EChre3



R47,800 pm

Gross Monthly Rental R47,800 Excl. VAT

5 0

640sqm warehouse with offices in a secure park

Elevate your operations with this generous 640m² corner unit, strategically located in the well-established Hennospark industrial hub. Situated within a secure, access-controlled park, the property offers a welcoming ground-floor reception area that leads into a thoughtfully designed office section, complete with private offices, modern restrooms, and a fully equipped kitchen—providing a comfortable and efficient workspace for your team. The park is professionally managed and benefits from 24/7 security, offering a safe and stable environment for business.

Designed for operational efficiency, the warehouse features a dedicated dispatch area and partitioned sorting rooms, allowing for a flexible and streamlined workflow. Equipped with 100 amps of three-phase power, the unit easily accommodates light

Features

Zoning Industrial

Interior

Floor Loading Cap. 1 Tn/m²
 Power 3 Phase Yes
 Power Amps 63

Exterior

Covered Parking Bays 5

Sizes

Floor Size 640m²
 Land Size 5,000m²

