



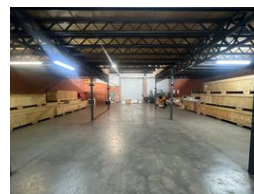
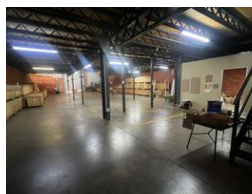
**Nathan Broodryk**  
0844223210  
nathan@newpointproperty.co.za

Contact Head Office

010 0354431

Office 40A  
Eden Meadows Complex  
1 Van Riebeeck Avenue  
Greenstone  
1609

650m<sup>2</sup> Warehouse To Let in Hennospark



R58,500 pm

Gross Monthly Rental R58,500 Excl. VAT

0 0

## High-Visibility 650m<sup>2</sup> Warehouse with Mezzanine, Offices & Private Yard

Unlock functionality and visibility with this 650m<sup>2</sup> warehouse, perfectly suited for logistics, distribution, or light industrial use. The unit includes a well-proportioned office component ideal for admin or customer-facing functions, plus a large private yard that supports truck access, loading/offloading, and secure outdoor storage. Inside, the open-plan warehouse is complemented by a mezzanine level and a built-in goods lift—boosting space and operational efficiency.

Situated with prime exposure to the N14 highway, the property offers excellent branding opportunities and effortless access to major transport routes. Whether you're scaling up or relocating your business, this well-located facility combines flexibility,

## Features

**Zoning** Industrial

### Interior

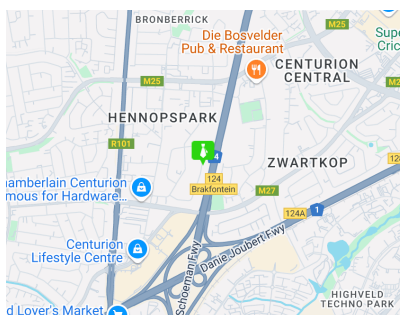
Floor Loading Cap.	1 Tn/m <sup>2</sup>
Air Conditioning	Yes
Power 3 Phase	Yes
Power Amps	100

### Exterior

Security	Yes
----------	-----

### Sizes

Floor Size	650m <sup>2</sup>
Land Size	20,000m <sup>2</sup>



<https://www.newpointproperty.co.za>