



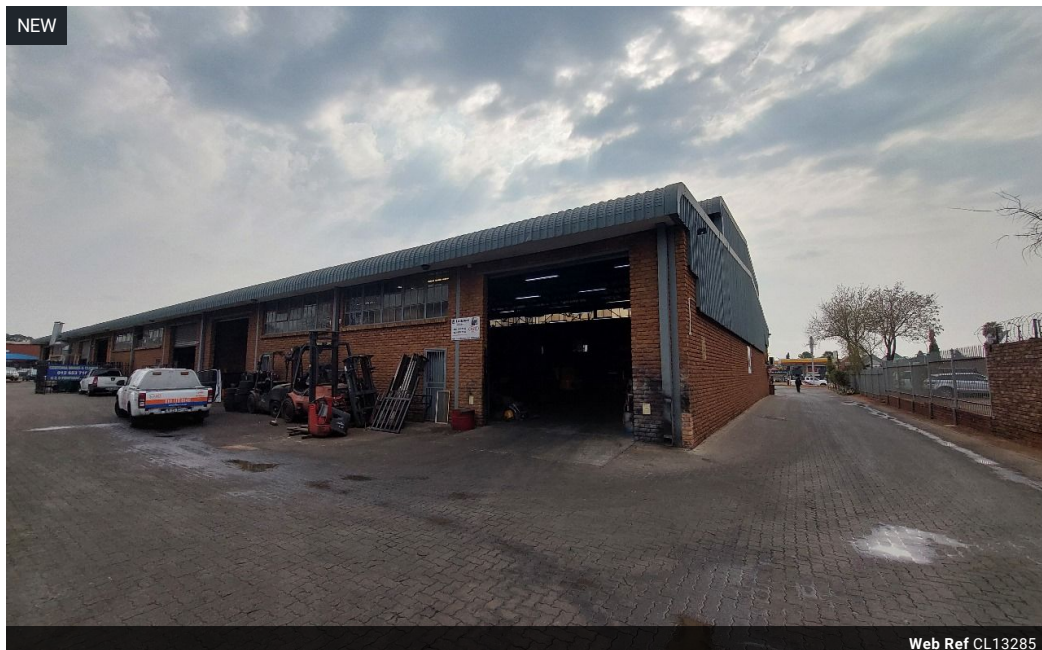
Nathan Broodryk
0844223210
nathan@newpointproperty.co.za

Contact Head Office

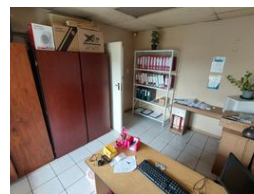
010 0354431

Office 40A
Eden Meadows Complex
1 Van Riebeeck Avenue
Greenstone
1609

820m² Warehouse To Let in Hennospark



Web Ref CL13285



R65,600 pm

Gross Monthly Rental R65,600 Excl. VAT



0



10

High-Visibility 820m² Warehouse with Prime Road Exposure in Hennospark

Unlock the full potential of your operations with this secure 820m² warehouse, strategically located in Hennospark with excellent visibility from a major road. Designed for efficiency and easy logistics, the facility features two 5-meter roller shutter doors, three-phase power, and a bright open-plan layout—perfect for manufacturing, distribution, or storage operations.

The professional office component includes three private offices, a large boardroom, and a welcoming reception area, complemented by dedicated kitchenettes and ablutions for both office and warehouse staff. With seamless truck access and a

Features

Zoning Industrial

Interior

Floor Loading Cap.	1 Tn/m ²
Power 3 Phase	Yes
Power Amps	150

Exterior

Security	Yes
Open Parking Bays	10

Sizes

Floor Size	820m ²
Land Size	30,000m ²

