



**Nathan Broodryk**  
0844223210  
nathan@newpointproperty.co.za

Contact Head Office

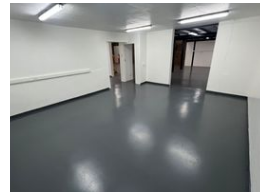
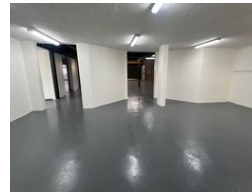
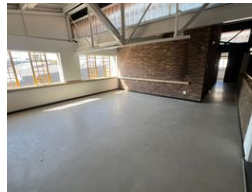
010 0354431

Office 40A  
Eden Meadows Complex  
1 Van Riebeeck Avenue  
Greenstone  
1609

640m<sup>2</sup> Warehouse To Let in Hennospark



Web Ref CL13236



R55,618 pm

Gross Monthly Rental R55,618 Excl. VAT

4 3

## Versatile 640m<sup>2</sup> Corner Unit with Office & Warehouse Space in Hennospark Industrial Park

Position your business in the heart of Hennospark with this spacious 640m<sup>2</sup> corner unit in a secure, access-controlled industrial park. The property features a professional ground-floor reception area leading to a well-designed office component with private offices, modern bathrooms, and a kitchen—ideal for supporting daily operations in comfort. Enjoy peace of mind with 24/7 security in a professionally managed business environment.

The warehouse is built for efficiency, offering a dedicated dispatch zone and partitioned sorting rooms for adaptable workflow. With 100 amps of three-phase power, the unit is well-suited for light industrial, storage, or distribution activities. A shared rear yard ensures easy access for deliveries, while covered front parking adds everyday convenience. Don't miss this flexible, well-

## Features

**Zoning** Industrial

### Interior

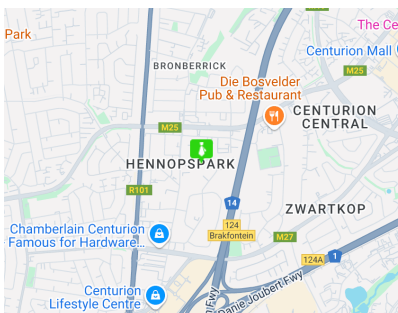
Floor Loading Cap.	1 Tn/m <sup>2</sup>
Power 3 Phase	Yes
Power Amps	100

### Exterior

Security	Yes
Covered Parking Bays	4
Open Parking Bays	3

### Sizes

Floor Size	640m <sup>2</sup>
Land Size	5,000m <sup>2</sup>



<https://www.newpointproperty.co.za>