



Nathan Broodryk
0844223210
nathan@newpointproperty.co.za

Contact Head Office

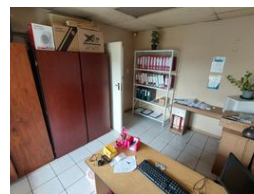
010 0354431

Office 40A
Eden Meadows Complex
1 Van Riebeeck Avenue
Greenstone
1609

820m² Warehouse To Let in Hennospark



Web Ref CL13018



R65,600 pm

Gross Monthly Rental R65,600 Excl. VAT



0



10

High-Visibility 820m² Warehouse in Hennospark with Truck Access & Modern Offices

This secure 820m² warehouse in the heart of Hennospark offers excellent exposure from the main road and effortless truck access, making it ideal for logistics, manufacturing, or distribution. The warehouse is equipped with three-phase power, two 5-meter roller shutter doors, and an open-plan layout filled with natural light—perfect for maximizing workflow and operational flexibility.

The office component includes three private offices, a spacious boardroom, and a professional reception area, designed to support day-to-day business activities. With separate kitchenettes and ablutions for both office and warehouse staff, this property delivers a fully functional and comfortable environment. Don't miss this opportunity to position your business in a high-demand industrial

Features

Zoning Industrial

Interior

Floor Loading Cap.	1 Tn/m²
Power 3 Phase	Yes
Power Amps	150

Exterior

Security	Yes
Open Parking Bays	10

Sizes

Floor Size	820m²
Land Size	30,000m²

