



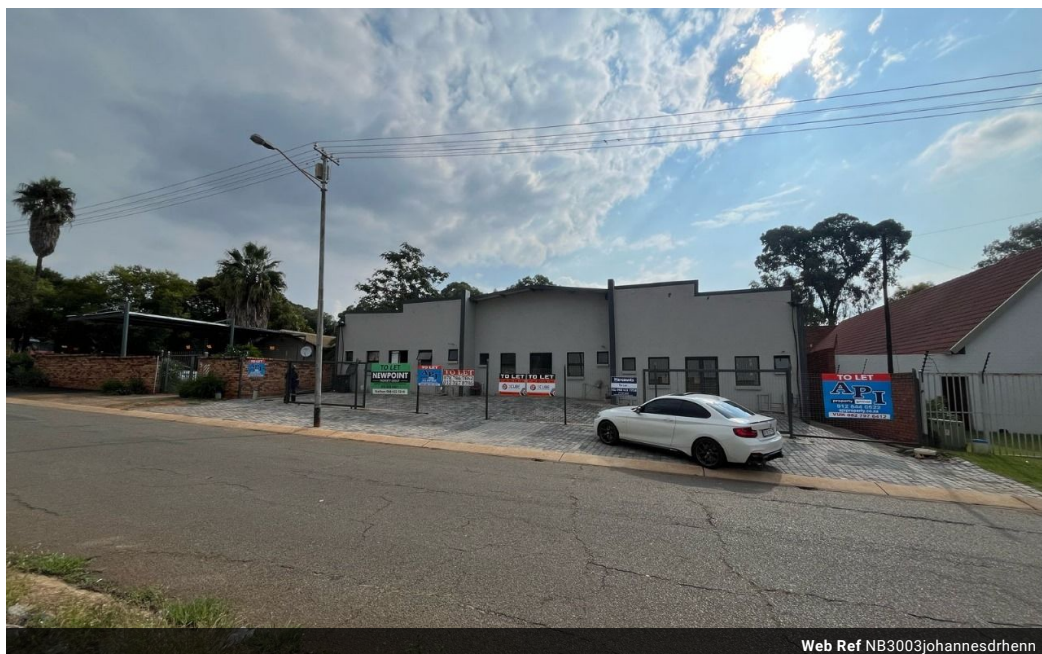
Nathan Broodryk
0844223210
nathan@newpointproperty.co.za

Contact Head Office

010 0354431

Office 40A
Eden Meadows Complex
1 Van Riebeeck Avenue
Greenstone
1609

300m² Warehouse To Let in Hennospark



Web Ref NB3003johannesdrhenn



R22,500 pm

Gross Monthly Rental R22,500 Excl. VAT

 0  0

300sqm Warehouse unit To Let

Positioned in the bustling industrial hub of Hennospark, Centurion, this 300m² warehouse offers an exceptional opportunity for businesses seeking both functionality and exposure. Located along a prominent main road, the property enjoys high visibility and constant traffic flow—ideal for businesses that value brand presence and accessibility. Set within a secure, well-managed industrial park, the property benefits from 24/7 security, ensuring a safe and reliable working environment for your team. The warehouse is designed with operational efficiency in mind and includes two bathrooms and a kitchenette for staff convenience.

The versatile layout accommodates a range of uses, from efficient storage to light manufacturing, and offers seamless access for

Features

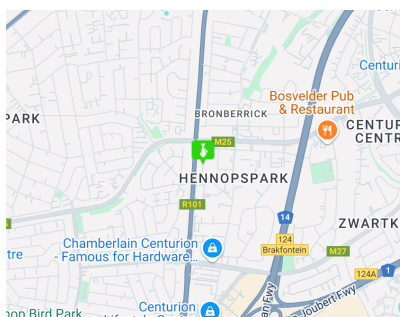
Zoning Industrial

Interior

Floor Loading Cap. 1 Tn/m²
Power 3 Phase Yes
Power Amps 63

Sizes

Floor Size 300m²
Land Size 2,000m²



<https://www.newpointproperty.co.za>