



Nathan Broodryk
 0844223210
nathan@newpointproperty.co.za

Contact Head Office

010 0354431

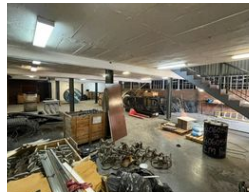
Office 40A
 Eden Meadows Complex
 1 Van Riebeeck Avenue
 Greenstone
 1609

940m² Warehouse To Let in Hennospark

NEW



Web Ref NB940sqmEA142re1



R59,500 pm

Gross Monthly Rental R59,500 Excl. VAT

7 0

940sqm warehouse available!

Elevate your business operations with this 940m² free-standing warehouse, strategically located in a secure and well-established industrial hub. This versatile property offers a generous 500m² private yard, ideal for outdoor storage, ample parking, and seamless loading and offloading of goods. The warehouse features an expansive open-plan floor space complemented by a mezzanine level, providing substantial storage capacity and layout flexibility for a variety of operational setups, including machinery placement or racking systems.

The office component is thoughtfully designed to support productivity and professionalism, featuring a welcoming reception area, multiple private offices, dedicated bathrooms, and a fully equipped kitchen. Whether you're in manufacturing, logistics, or

Features

Zoning Industrial

Interior

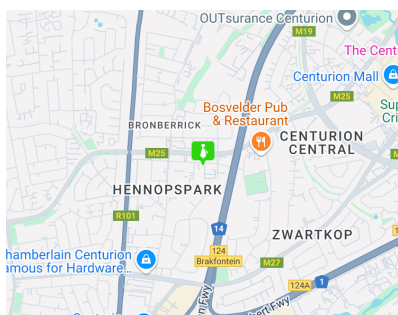
Floor Loading Cap. 1 Tn/m²
 Power 3 Phase Yes
 Power Amps 100

Exterior

Covered Parking Bays 7

Sizes

Floor Size 940m²
 Land Size 1,600m²



<https://www.newpointproperty.co.za>