

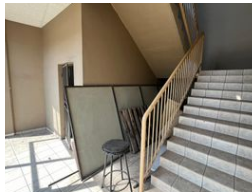
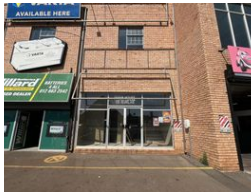


Nathan Broodryk  
0844223210  
nathan@newpointproperty.co.za

Contact Head Office  
010 0354431

Office 40A  
Eden Meadows Complex  
1 Van Riebeeck Avenue  
Greenstone  
1609

380m² Warehouse To Let in Centurion Central



R30,500 pm

Gross Monthly Rental R30,500 Excl. VAT

0 2

380m2 with good road exposure

This 380sqm warehouse is ideally located in the heart of Centurion Central, offering excellent road exposure for maximum visibility and business presence. Positioned on the first floor of a well-maintained building, the property provides convenient access via a sturdy ramp, allowing for smooth entry of cars and small trucks directly into the warehouse. The elevated positioning enhances security while also taking advantage of the surrounding commercial activity, making it a strategic hub for growing businesses. Ample signage opportunities on the building's facade allow tenants to effectively promote their brand in a high-traffic area.

The warehouse itself is designed to accommodate a wide range of business needs. Whether you're in distribution, light

Features

Zoning		Industrial	
Interior		Exterior	
Floor Loading Cap.	1 Tn/m²	Open Parking Bays	2
Power 3 Phase	Yes		
Power Amps	63		
		Sizes	
		Floor Size	380m²
		Land Size	5,000m²

