



**Martin Montgomery**

Candidate Property Practitioner  
Registered with PPRA  
(FFC 121 152 3)

0818542055

[martin@newpointproperty.co.za](mailto:martin@newpointproperty.co.za)

Contact Head Office

010 0354431

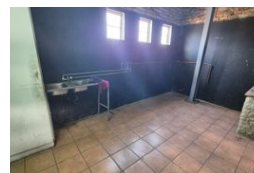
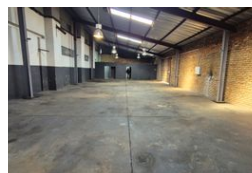
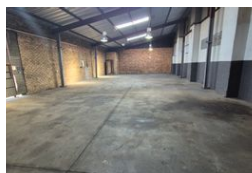
Office 40A  
Eden Meadows Complex  
1 Van Riebeeck Avenue  
Greenstone  
1609

## 400m² Warehouse To Let in Vulcania

NEW



Web Ref MMTL400U2Vucania



R16,000 pm

Gross Monthly Rental R16,000 Excl. VAT



0



20

## 400m2 Warehouse/Workshop To Let in Vulcania with Main Road Exposure

A 400m² warehouse/workshop with yard space is now available to let in the established industrial area of Vulcania, Brakpan. This versatile facility is well-suited for light industrial, manufacturing, or mechanical operations. The warehouse features a spacious open-plan layout with good height, a high roller shutter door for easy loading and offloading, and 3-phase power supply. The property also offers a generous yard area, ideal for vehicle access, external storage, or parking. Situated within a secure industrial zone with access control, it enjoys convenient access to major routes such as the N17 and R554, making it highly accessible for

## Features

**Zoning** Industrial

### Interior

Power 3 Phase Yes  
Power Amps 100

### Exterior

Open Parking Bays 20

### Sizes

Floor Size 400m²  
Land Size 800m²

