



Wayne Churchyard
0817726802
wayne@newpointproperty.co.za

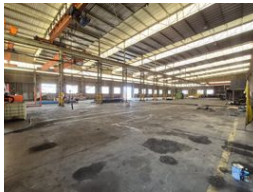
Contact Head Office
010 0354431

Office 40A
Eden Meadows Complex
1 Van Riebeeck Avenue
Greenstone
1609

4,000m² Factory To Let in Vulcania



Web Ref CL12725



R180,000 pm

Gross Monthly Rental R180,000 Excl. VAT

0 0

4,000m² Heavy-Duty Factory with 5,000m² Yard & Cranes – To Let in Vulcania

This expansive 4,000m² factory, situated in a secure industrial park in Vulcania, offers exceptional height to the eaves (±9m) with ample natural light throughout. Designed for heavy-duty operations, the facility features a robust 400-amp, three-phase power supply, five large on-grade roller shutter doors, and top-tier lifting capacity with 2x 20-ton and 2x 5-ton overhead cranes. The massive 5,000m² yard ensures seamless logistics, allowing for easy truck maneuvering and storage.

Complementing the warehouse is a well-appointed office block, complete with multiple offices, a boardroom, storerooms, and ample ablution facilities for staff and visitors. Strategically positioned near the N12 and N17 highways, this property offers

Features

Zoning		Industrial	
Interior		Exterior	
Power 3 Phase	Yes	Security	Yes
Power Amps	400	Sizes	
		Floor Size	4,000m²
		Land Size	9,000m²

