



Donovan Saunders

Candidate Property Practitioner
Registered with PPRA
(FFC 121 151 8)

0743713355

donovan@newpointproperty.co.za

Contact Head Office

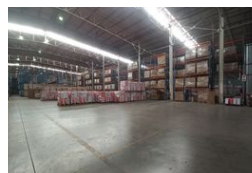
010 0354431

Office 40A
Eden Meadows Complex
1 Van Riebeeck Avenue
Greenstone
1609

10,786m² Warehouse To Let in Jet Park



Web Ref DS10786412CL



R701,090 pm

Gross Monthly Rental R701,090 Excl. VAT **Monthly Rates** R53,930 Excl. VAT

10 10

10,786m² Logistics Facility with Offices in Jet Park

Unlock efficiency and scale with this 10,786m² facility, strategically located in the sought-after industrial hub of Jet Park. Designed for logistics, storage, or distribution, the warehouse spans 8,808m² and comes fully racked, offering exceptional height, natural light, and a built-in sprinkler system. Its smart layout supports high-volume operations and quick turnaround times, perfect for businesses focused on streamlined workflows.

Complementing the warehouse is 1,978m² of modern office space, creating the ideal balance between operational functionality and corporate professionalism. Multiple loading bays, superlink access, and quality staff amenities enhance day-to-day efficiency. Conveniently positioned near key highways, this prime property is available at R755,020/month (excl. VAT & utilities). Contact us

Features

Zoning Industrial

Interior

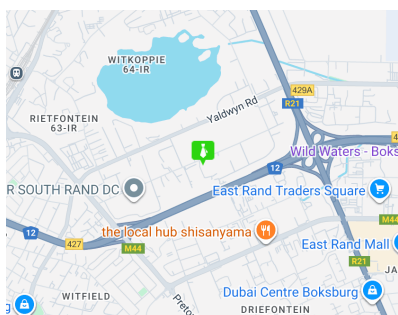
Power 3 Phase Yes
Power Amps 300

Exterior

Covered Parking Bays 10
Open Parking Bays 10

Sizes

Floor Size 10,786m²
Land Size 20,000m²
Building Height 10m



<https://www.newpointproperty.co.za>