



Donovan Saunders
Candidate Property
Practitioner
Registered with PPRA
(FFC 121 151 8)
0743713355

donovan@newpointproperty.co.za

Contact Head Office

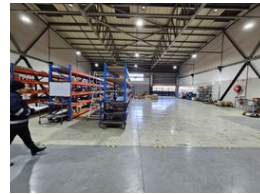
010 0354431

Office 40A
Eden Meadows Complex
1 Van Riebeeck Avenue
Greenstone
1609

735m² Warehouse To Let in Jet Park



Web Ref DS735JPTL



R57,330 pm

Gross Monthly Rental R57,330 Excl. VAT

0 4

735sqm Industrial warehouse to let in Jet Park!

This modern A-grade warehouse spans approximately 735m² and is ideally situated within a secure, access-controlled industrial park offering 24-hour security. The warehouse boasts generous internal height, making it ideal for racking, storage, or light manufacturing operations. Ample natural light floods the space through well-positioned translucent panels, creating a bright and energy-efficient working environment. A large on-grade roller shutter door ensures seamless access for deliveries and dispatch, while a mezzanine level provides added flexibility—perfect for additional storage or to extend the office component as needed.

The office area includes a professional reception, individual offices, and a well-sized boardroom, providing a functional workspace

Features

Zoning Industrial

Interior

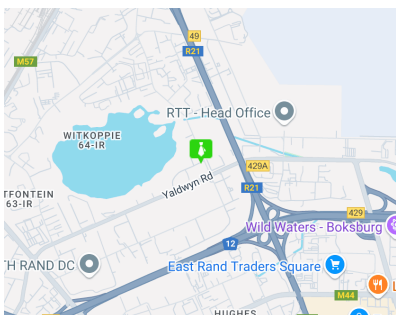
Power 3 Phase	Yes
Power Amps	160

Exterior

Security	Yes
Open Parking Bays	4

Sizes

Floor Size	735m²
Land Size	5,857m²
Building Height	7m



<https://www.newpointproperty.co.za>